
2008

MURDER ANALYSIS

in Chicago



Chicago Police Department



Table of Contents

I. Introduction	1
II. Chicago Murders from 1991 to 2008.....	2
Murder Totals in the City of Chicago.....	2
Murder Totals by Area and District	4
Murder Totals by Type of Location	6
Murder Clearances	12
Murder Totals by Day, Month, and Time.....	15
Murder Totals by Method.....	21
Murder Totals by Motive	24
Murder Victims.....	27
Murder Offenders.....	34
III. Conclusion.....	44

I. Introduction

The Crime Analysis Section of the Chicago Police Department's Detective Division houses a database with information pertaining to murders that occurred in Chicago. The database includes various types of information pertaining to each murder, including the following:

- The police area and district in which the murder occurred
- Clearances, or resolutions of murder investigations
- The type of geographic location where the victim was found (e.g., on the street, in a residence)
- The day, date, and time of the murder incident and of the victim's death
- The type of weapon used to commit the murder and, related to this, the method by which the victim was killed
- The motive that precipitated the murder
- Victim demographic information (race, age, sex, and whether the victim had a prior Chicago Police Department arrest record)
- Offender demographic information (race, age, sex, and whether the offender has a prior Chicago Police Department arrest record)
- For each murder incident, the number of offenders involved

Some of this information is initially entered into the database shortly following each murder incident. Additional information pertaining to the incident is periodically added as the Detective Division receives updated information. This report utilizes Detective Division data to examine the characteristics of 2008 murders, and annual murder trends from 1991 to 2008.¹

¹ The data for this report is only accurate as of the date in which it was extracted because the Detective Division database is updated daily. Data for this report was extracted on March 25, 2009.

II. Chicago Murders From 1991 to 2008

Murder Totals in the City of Chicago

Figure 1 shows that there were 511 murder victims in the City of Chicago in 2008. The 2008 total was 14.8% higher than the total in 2007, although 44.9% lower than the total for 1991.

FIGURE 1: NUMBER OF MURDER VICTIMS IN THE CITY OF CHICAGO, 1991 TO 2008

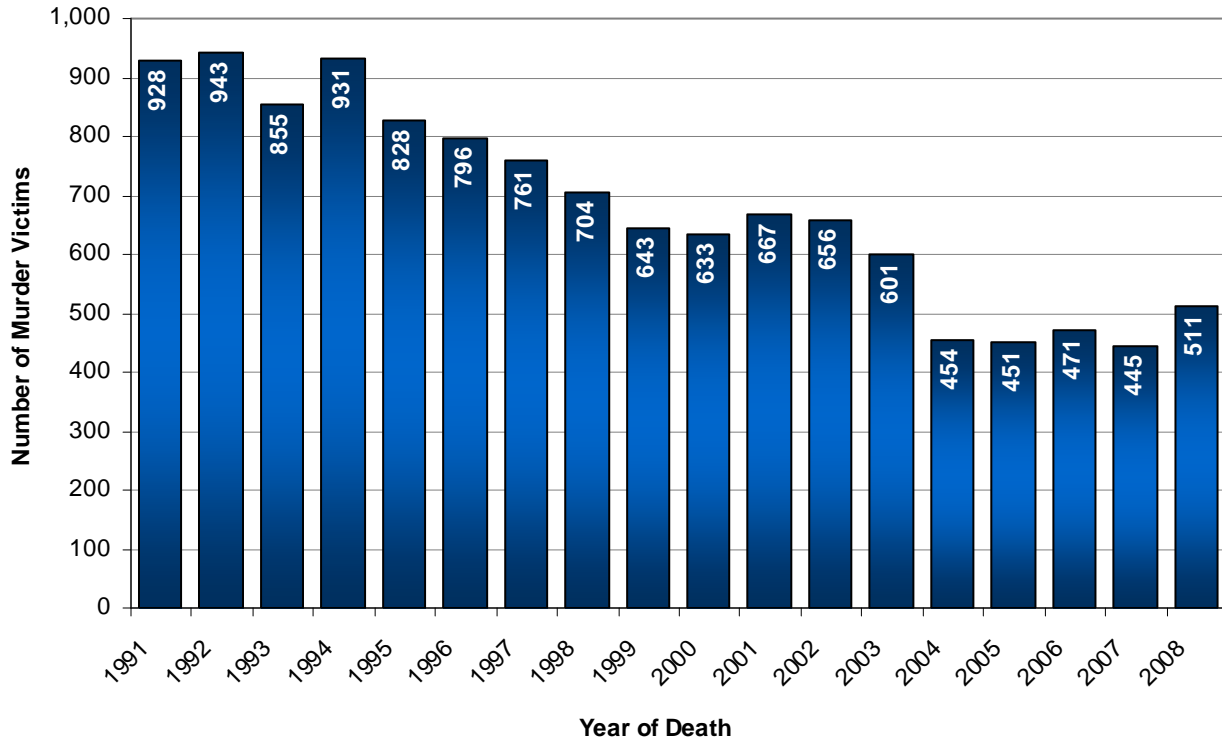
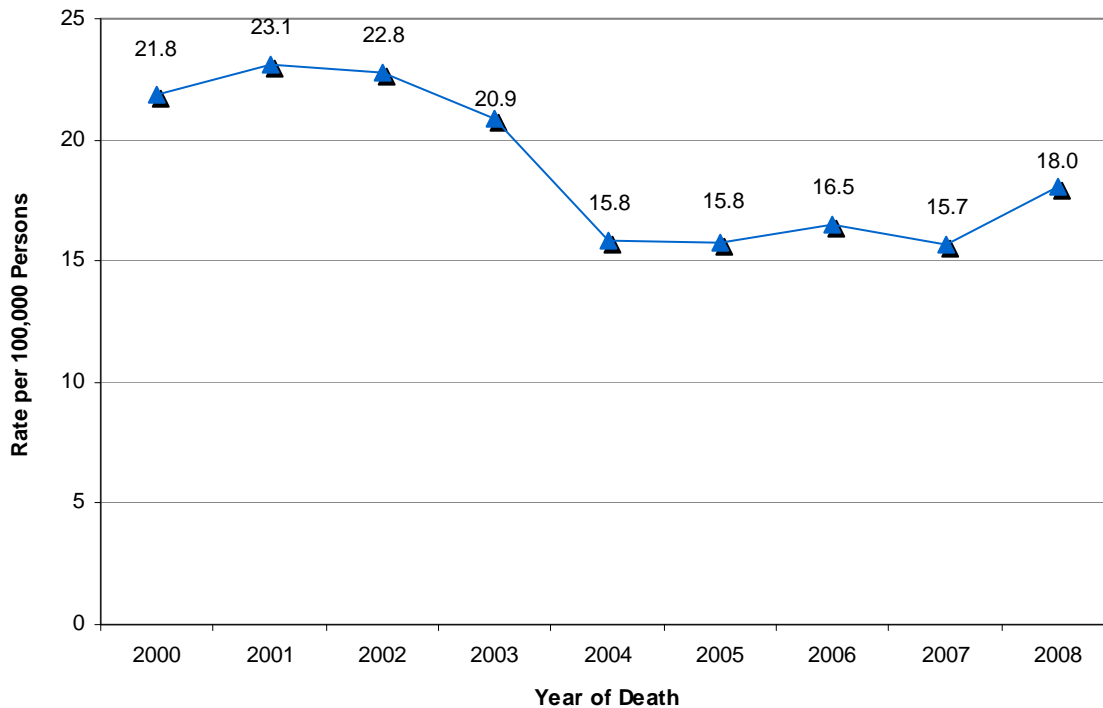


Figure 2 shows murder victim rates per 100,000 persons in the City of Chicago from 2000 to 2008.² Although the 2008 murder victim rate was numerically higher than the rate for 2007, the increase was not significant. As indicated in Figure 2, there was a significant decline between 2003 and 2004, after which the murder rate has remained relatively stable, with no significant increases or decreases.

FIGURE 2: MURDER VICTIM RATES FOR THE CITY OF CHICAGO, 2000 TO 2008



² Citywide rates were based on population estimates provided by Dr. Wesley Skogan, from the Northwestern University Institute for Policy Research.

Murder Totals by Area and District

Table 1 shows 2007 and 2008 murder victim totals by the police area and police district in which the victim was found. The greatest number of murders occurred in Areas 1 and Area 2.

**TABLE 1: 2007 AND 2008 MURDER VICTIM TOTALS
BY AREA AND DISTRICT**

District	2007	2008
Area 1		
02	17	21
07	40	46
08	29	36
09	32	27
21	3	4
Area 1 Total	121	134
Area 2		
03	32	41
04	29	44
05	35	28
06	38	40
22	17	17
Area 2 Total	151	170
Area 3		
18	2	5
19	2	4
20	1	2
23	11	2
24	11	8
Area 3 Total	27	21
Area 4		
01	3	3
10	27	39
11	41	46
12	6	11
13	10	7
Area 4 Total	87	106
Area 5		
14	6	12
15	22	30
16	5	3
17	4	5
25	22	30
Area 5 Total	59	80
Citywide Total	445	511

Table 2 compares 2007 and 2008 murder victim rates by district. Table 2 indicates that, from 2007 to 2008, murder victim rates decreased in only six police districts and remained unchanged in two districts. The remaining 17 districts experienced increases.

**TABLE 2: DISTRICT MURDER VICTIM RATES
PER 100,000 PERSONS, 2007 VS. 2008**

District	2007 Rate	2008 Rate	% Change	2007 Ranking	2008 Ranking
1	9.3	9.3	0.0%	16	15
2	35.4	43.7	23.5%	5	4
3	34.7	44.5	28.1%	6	3
4	21.7	32.9	51.7%	8	8
5	41.3	33.0	-20.0%	3	7
6	37.8	39.8	5.3%	4	6
7	46.0	52.9	15.0%	2	2
8	12.2	15.1	24.1%	13	12
9	19.5	16.5	-15.6%	10	11
10	19.7	28.5	44.4%	9	9
11	50.0	56.1	12.2%	1	1
12	8.2	15.1	83.3%	17	12
13	15.6	10.9	-30.0%	12	14
14	4.4	8.8	100.0%	19	16
15	30.4	41.4	36.4%	7	5
16	2.6	1.6	-40.0%	21	24
17	2.6	3.2	25.0%	21	21
18	1.8	4.5	150.0%	23	19
19	1.9	3.8	100.0%	22	20
20	1.0	2.0	100.0%	24	23
21	3.8	5.1	33.3%	20	18
22	16.6	16.6	0.0%	11	10
23	11.6	2.1	-81.8%	14	22
24	7.5	5.5	-27.3%	18	17
25	10.3	14.1	36.4%	15	13

Murder Totals by Type of Location

Table 3 and Table 4 show the number of 2008 murder victims by the type of geographic location where the victim was found. Table 3 shows totals for indoor locations. Table 4 shows totals for outdoor locations.

Note that these totals do not necessarily reflect where murders occurred. For instance, if a person was murdered in a motel and the body placed in an alley, the location would be recorded as alley because that is where the body was found. However, in most instances, the same location where the victim is found is also the location where the murder occurred.

In 2008, a majority of murder victims (78.7%) were found outdoors. The public way was the most common outdoor location. A residence (e.g., house, apartment, hotel room) was the most common indoor location.

**TABLE 3: 2008 MURDER VICTIMS
BY INDOOR LOCATION TYPE**

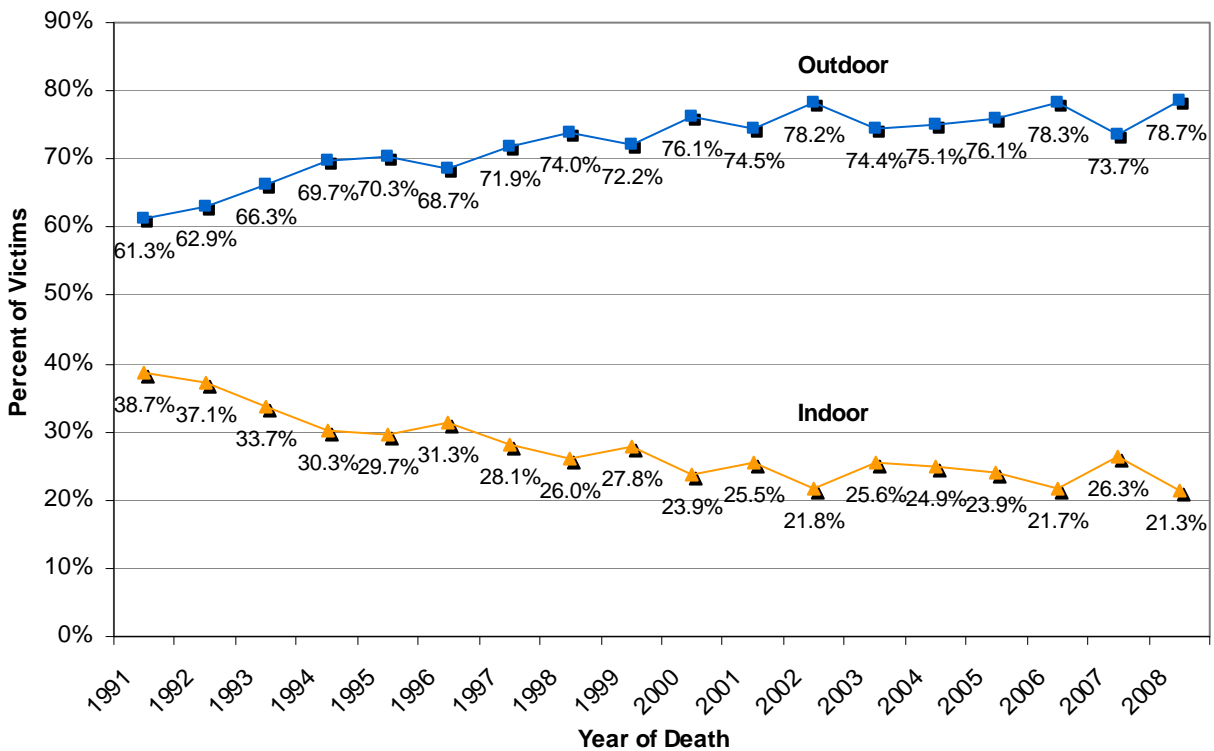
Structure	Description	Victims 2008
C.H.A. BUILDING	CHA Apartment	0
	CHA Hallway	1
	CHA Stairwell	0
		1
COMMERCIAL	Barber Shop / Beauty Salon	1
	Bank	0
	Factory	1
	Banquet Hall	0
	Liquor Store	1
	Garage/Auto Repair	0
	Office	0
	Restaurant	2
	Retail Store	7
	Warehouse	0
		12
MISC. LOCATIONS	Abandoned Building	0
	Nursing Home	1
		1
PLACE OF ENTERTAINMENT	Tavern	3
		3
RESIDENCE	Apartment	37
	Basement	2
	Coach House	0
	Garage	4
	Hallway	6
	Hotel	1
	House	41
	Motel	1
	Vestibule	0
		92
TOTAL INDOORS		109

**TABLE 4: 2008 MURDER VICTIMS
BY OUTDOOR LOCATION TYPE**

Structure	Description	Victims 2008
C.H.A. PROPERTIES	CHA Grounds	1
	CHA Parking Lot	2
		3
MISC. LOCATIONS	Car Wash	0
	Dumpster	1
	Gas Station Drive/Prop.	5
	Lake	0
	Park Property	6
	Parking Lot	7
	Railroad Property	2
	River Bank	0
	School Yard	2
	Vacant Lot	7
	Wooded Area	0
		30
PUBLIC TRANSPORTATION	CTA "L" Platform	1
	CTA Bus	1
	Livery Auto	0
		2
PUBLIC WAY	Alley	28
	Auto	59
	Street	251
	Trailer	0
	Truck	0
		338
RESIDENTIAL AREA	Driveway	2
	Gangway	2
	Porch	17
	Stairwell	2
	Yard	6
		29
TOTAL OUTDOORS		402

Figure 3 shows trends from 1991 to 2008 in the percentage of indoor and outdoor murder victims. Table 5 shows the corresponding totals. As illustrated in Figure 3, since 1991 there has been an overall increasing trend in the percentage of murders occurring outdoors.

FIGURE 3: PERCENTAGE OF MURDER VICTIMS FOUND OUTDOORS VERSUS INDOORS, 1991 TO 2008



**TABLE 5: INDOOR AND OUTDOOR MURDERS,
1991 TO 2008**

Year	Indoor	Outdoor	Total
1991	359	569	928
1992	350	593	943
1993	288	567	855
1994	282	649	931
1995	246	582	828
1996	249	547	796
1997	214	547	761
1998	183	521	704
1999	179	464	643
2000	151	482	633
2001	170	497	667
2002	143	513	656
2003	154	447	601
2004	113	341	454
2005	108	343	451
2006	102	369	471
2007	117	328	445
2008	109	402	511

Trends in the percentage of victims found at specific types of indoor and outdoor locations were also examined. Throughout the time period examined, the most common location types were the public way, residence, and outdoor miscellaneous locations. Figure 4 shows trends in the percentage of victims found at these three locations from 1991 to 2008. Table 6 shows the corresponding totals.

As indicated in Figure 4, there was an increasing trend in the percentage of murders occurring on the public way, while there was a slight, overall downward trend in the percentage of murders occurring in residences and very few changes overall in the percentage occurring at various other outdoor locations.

FIGURE 4: PERCENTAGE OF MURDER VICTIMS FOUND AT THREE LOCATION TYPES, 1991 TO 2008

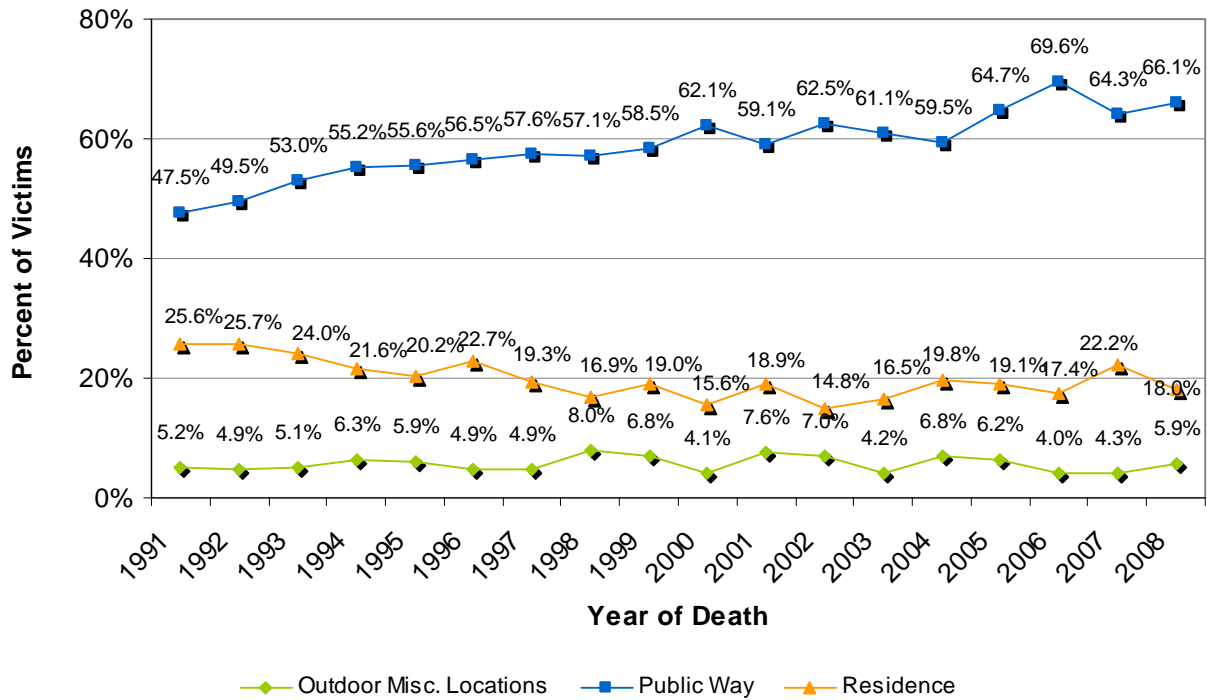


TABLE 6: MURDERS AT THREE LOCATION TYPES, 1991 TO 2008

Year	Outdoor Misc. Locations	Public Way	Residence	Total
1991	48	441	238	928
1992	46	467	242	943
1993	44	453	205	855
1994	59	514	201	931
1995	49	460	167	828
1996	39	450	181	796
1997	37	438	147	761
1998	56	402	119	704
1999	44	376	122	643
2000	26	393	99	633
2001	51	394	126	667
2002	46	410	97	656
2003	25	367	99	601
2004	31	270	90	454
2005	28	292	86	451
2006	19	328	82	471
2007	19	286	99	445
2008	30	338	92	511



Murder Clearances

Murders are cleared when an arrest is made and the arrestee is prosecuted. Murders may also be cleared exceptionally. In the Uniform Crime Reporting Handbook, the Federal Bureau of Investigation lists circumstances in which murders may be cleared exceptionally. To exceptionally clear cases police officials must have identified the suspect, have enough evidence to support the arrest and charging of the suspect, know where the suspect is, but some circumstance exists as to why the suspect cannot be arrested, charged, or prosecuted. These circumstances include, but are not limited to: (1) offender suicides, (2) double murders (i.e., two persons kill each other), (3) deathbed confessions, (4) instances when the offender is killed by the police or a citizen, (5) instances when an offender who is already in custody or serving a sentence confesses to the murder, (6) instances when an offender is prosecuted by state or local authorities in another city for a different offense or prosecuted in another city or state by the Federal government for an offense which may be the same, (7) instances when extradition is denied, (8) instances when the offender dies after a warrant is issued, but before being taken into custody, or (9) the prosecution refuses to prosecute the case.

Table 7 shows 2008 murder clearance data, broken down by area and district. The "Yes" and "No" columns in Table 7 indicate whether each 2008 murder occurring in the area or district was cleared. Murders not cleared remain open. In addition, Table 7 shows the number of murders occurring in previous years (from 1991 to 2007) that detectives cleared in 2008.

Figure 5 show clearance percentages for murders occurring from 1991 to 2008 as of the date when the data were queried regardless of when the murders were cleared. Table 8 provides the underlying data. Clearance percentages tended to decrease across the years examined. This trend is partly explainable by opportunity. For earlier years, there is a longer period of time during which the murder could have been cleared. For example, 1991 murders could have been cleared during the time period from the date of death in 1991 to present, whereas 2008 murders could only have been cleared during the time period from the date of death in 2008 to when the data were extracted.

TABLE 7: 2008 MURDER CLEARANCE DATA

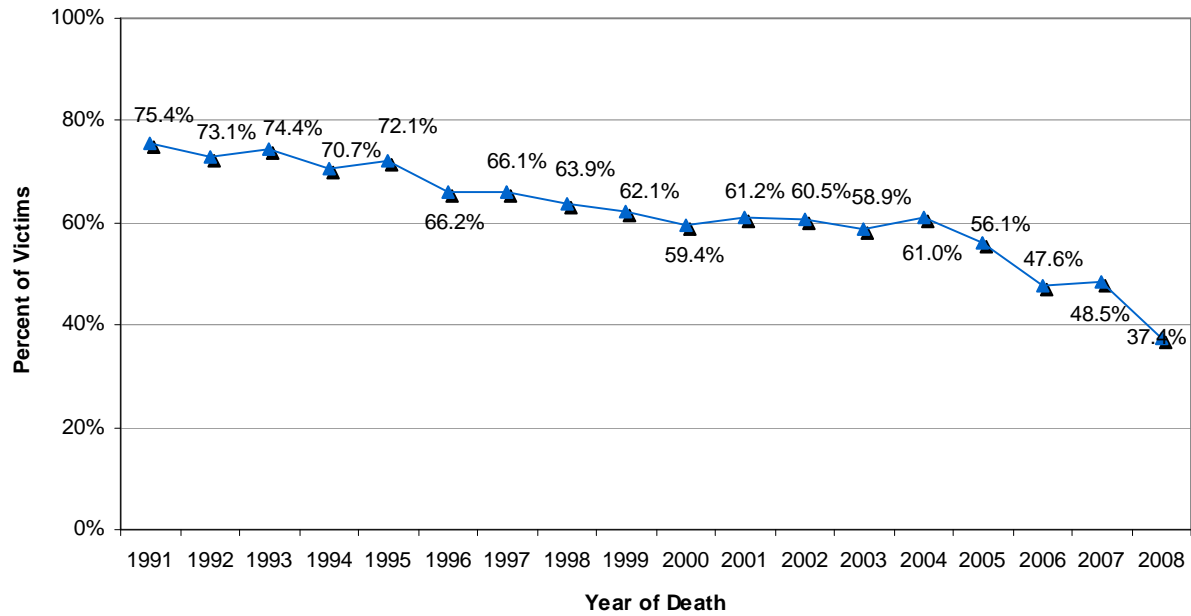
Area	District	2008 Murders Cleared			Previous Year Murders Cleared in 2008**
		No*	Yes	% Cleared	
1	2	13	8	38.1%	3
	7	26	20	43.5%	11
	8	26	10	27.8%	5
	9	17	10	37.0%	12
	21	3	1	25.0%	4
Area 1 Total		85	49	36.6%	35
2	3	25	16	39.0%	4
	4	27	17	38.6%	6
	5	23	5	17.9%	6
	6	21	19	47.5%	4
	22	14	3	17.6%	3
Area 2 Total		110	60	35.3%	23
3	19	2	2	50.0%	0
	20	1	1	50.0%	1
	23	2	0	0.0%	3
	24	3	5	62.5%	4
Area 3 Total		8	8	50.0%	8
4	10	29	10	25.6%	3
	11	31	15	32.6%	12
	12	5	6	54.5%	2
	13	2	5	71.4%	2
Area 4 Total		67	36	35.0%	19
5	14	7	5	41.7%	1
	15	14	16	53.3%	9
	16	1	2	66.7%	0
	17	3	2	40.0%	0
	25	20	10	33.3%	3
Area 5 Total		45	35	43.8%	13
CCG***	1	2	1	33.3%	2
	18	3	2	40.0%	0
CCG Total		5	3	37.5%	2
Citywide Total		320	191	37.4%	98

*Murders not cleared remain open.

** This report only examines murders that occurred from 1991 to 2008. It should be noted, however, that an additional 15 murders occurring prior to 1991 were also cleared in 2008.

***CCG refers to the Central Control Group, which is the downtown area of the City.

**FIGURE 5: MURDER CLEARANCES,
1991 TO 2008**



**TABLE 8: MURDER CLEARANCES,
1991 TO 2008**

Year	Cleared		Total
	Yes	No*	
1991	700	228	928
1992	689	254	943
1993	636	219	855
1994	658	273	931
1995	597	231	828
1996	527	269	796
1997	503	258	761
1998	450	254	704
1999	399	244	643
2000	376	257	633
2001	408	259	667
2002	397	259	656
2003	354	247	601
2004	277	177	454
2005	253	198	451
2006	224	247	471
2007	216	229	445
2008	191	320	511

* Murders not cleared remain open.



Murder Totals by Day, Month, and Time

Figure 6 shows 2008 murder victim totals, broken down by the day of the week on which victims were injured.³ In 2008, approximately half of murders (51.9%) occur on weekends (Friday, Saturday, or Sunday).

FIGURE 6: MURDER VICTIMS BY DAY OF WEEK INJURED, 2008

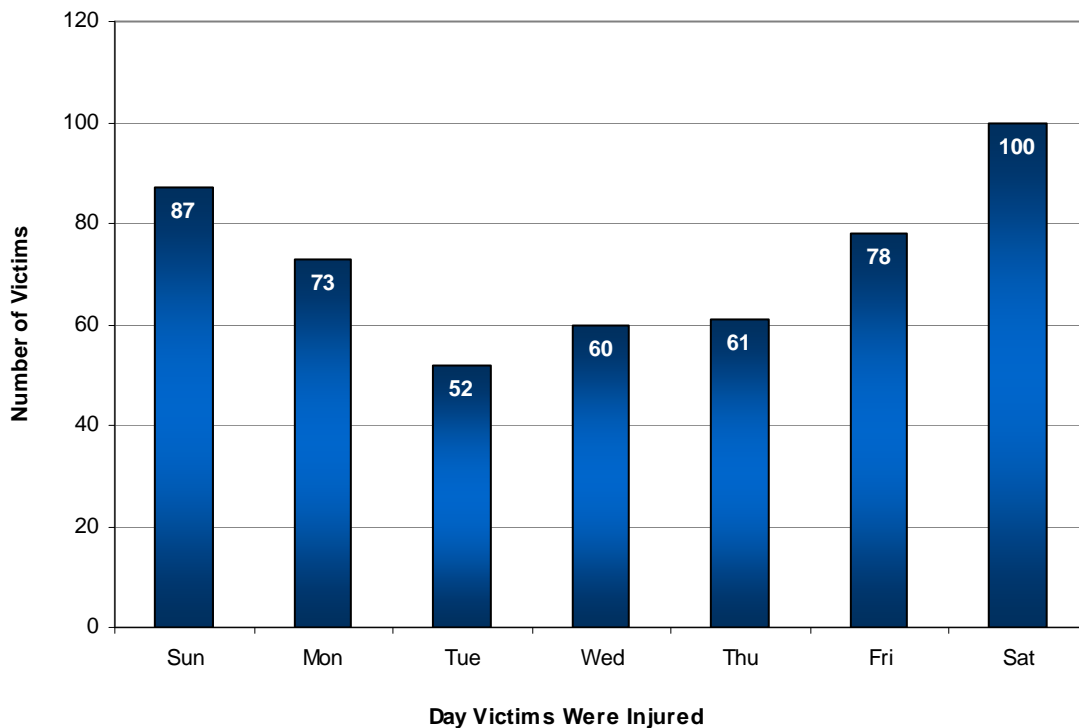


Figure 7 shows the percentage of murder victims found on weekends (Friday, Saturday, and Sunday) and weekdays (Monday thru Thursday) from 1991 to 2008. Table 9 provides the underlying data. As indicated in Figure 7, about half of victims were injured during weekends, and that percentage remained relatively stable throughout the time period examined.

³ Days are based on 24 hour periods. As indicated in Figure 10, a large number of murders occur between the hours of 1800 and 0359 hours. Therefore, the high number of murders occurring on Friday, Saturday, and Sunday likely occurred during early morning hours (i.e., 0001 to 0359 hours).

FIGURE 7: MURDER VICTIMS BY DAY OF WEEK INJURED, 1991 TO 2008

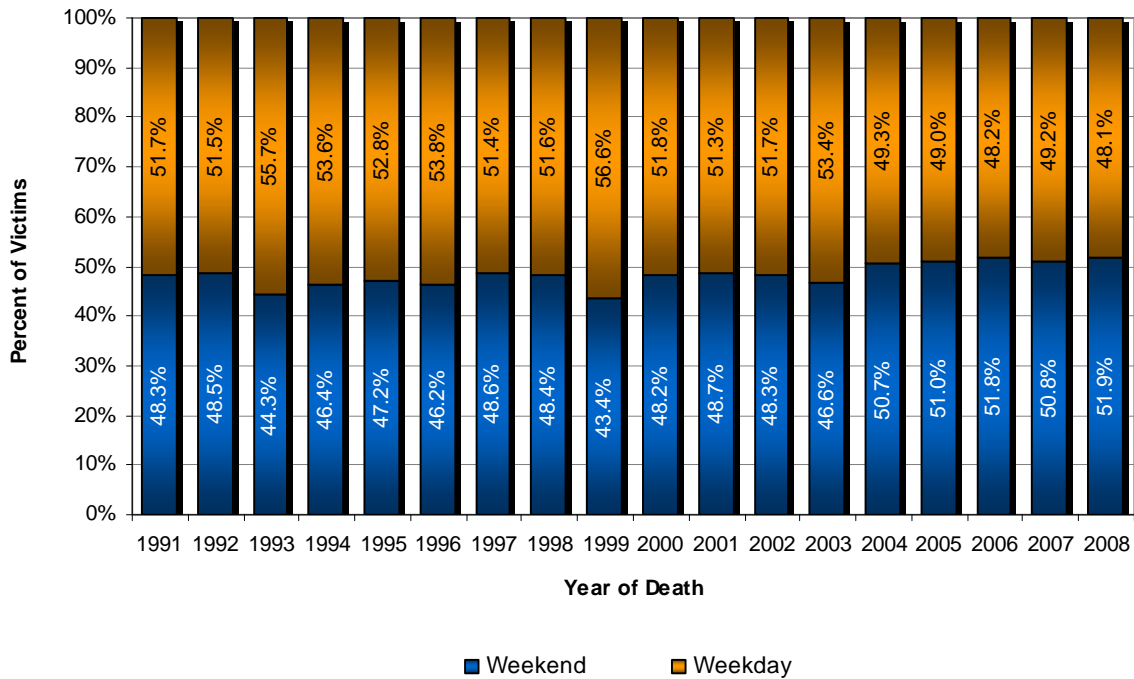


TABLE 9: WEEKEND AND WEEKDAY MURDER VICTIMS, 1991 TO 2008

Year	Weekday	Weekend	Total
1991	480	448	928
1992	486	457	943
1993	476	379	855
1994	499	432	931
1995	437	391	828
1996	428	368	796
1997	391	370	761
1998	363	341	704
1999	364	279	643
2000	328	305	633
2001	342	325	667
2002	339	317	656
2003	321	280	601
2004	224	230	454
2005	221	230	451
2006	227	244	471
2007	219	226	445
2008	246	265	511



Figure 8 shows 2008 murder totals broken down by the month during which victims were injured. The figure shows a tendency for murders to decrease during the colder months of the year and increase during the warmer months of the year.

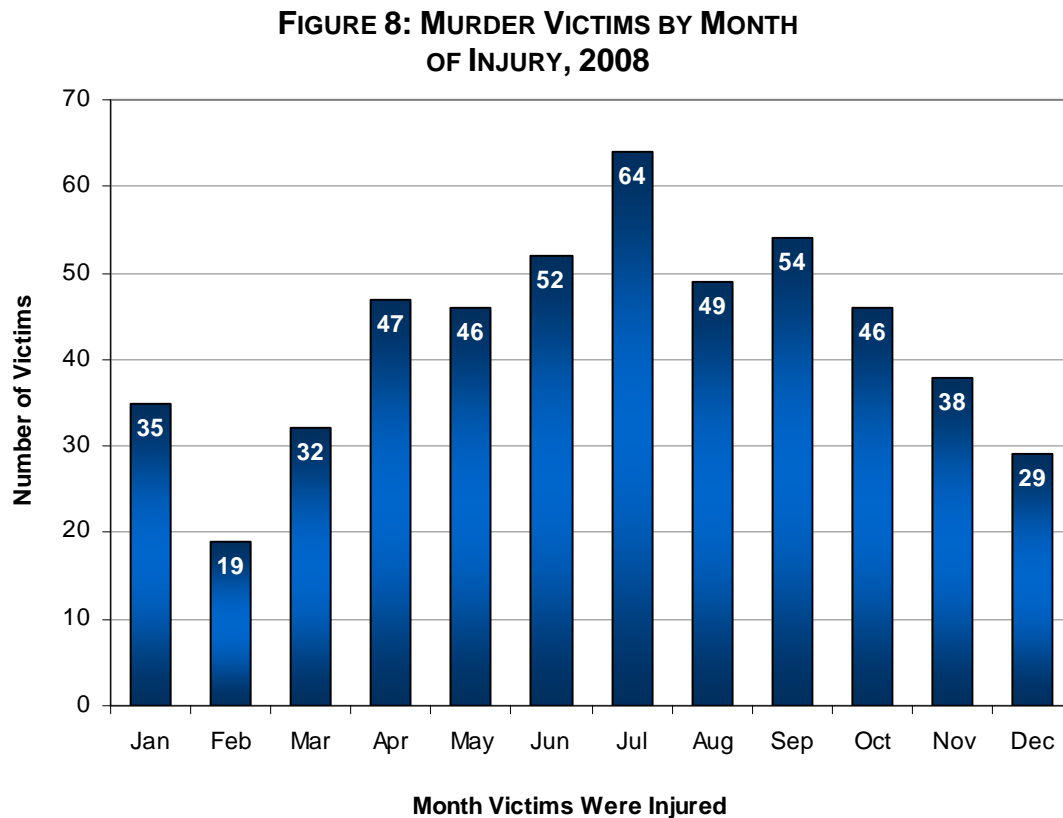


Figure 9 shows the percentage of murder victims injured for the four quarters of each year. Table 10 shows the number of murder victims found by quarter from 1991 to 2008. As shown in Figure 9, slightly higher percentage of murder victims were injured in quarters 2 and 3—which represent the warmest months of the year—across the years examined.

FIGURE 9: MURDER VICTIMS BY YEARLY QUARTER, 1991 TO 2008

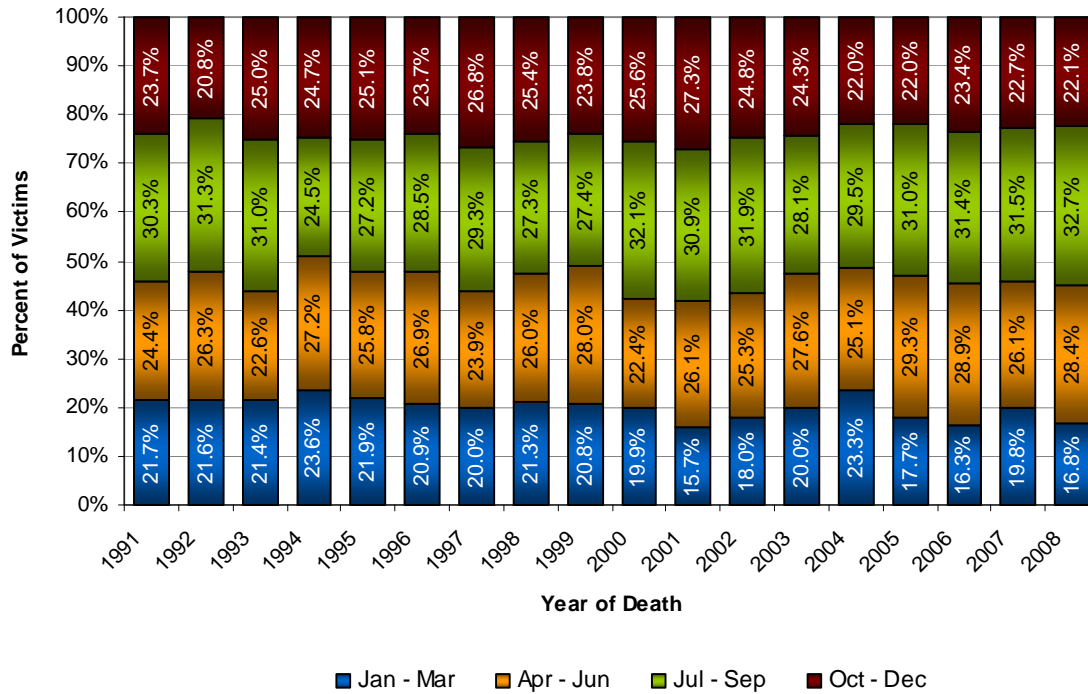


TABLE 10: MURDER VICTIMS BY QUARTER, 1991 TO 2008

Year	Quarter 1	Quarter 2	Quarter 3	Quarter 4	Total
1991	201	226	281	220	928
1992	204	248	295	196	943
1993	183	193	265	214	855
1994	220	253	228	230	931
1995	181	214	225	208	828
1996	166	214	227	189	796
1997	152	182	223	204	761
1998	150	183	192	179	704
1999	134	180	176	153	643
2000	126	142	203	162	633
2001	105	174	206	182	667
2002	118	166	209	163	656
2003	120	166	169	146	601
2004	106	114	134	100	454
2005	80	132	140	99	451
2006	77	136	148	110	471
2007	88	116	140	101	445
2008	86	145	167	113	511



Figure 10 shows 2008 murders broken down by the hour that victims were injured. As indicated in Figure 10, the majority of murders occurred between 1800 and 0359 hours.

FIGURE 10: 2008 MURDER VICTIMS BY HOUR OF INJURY

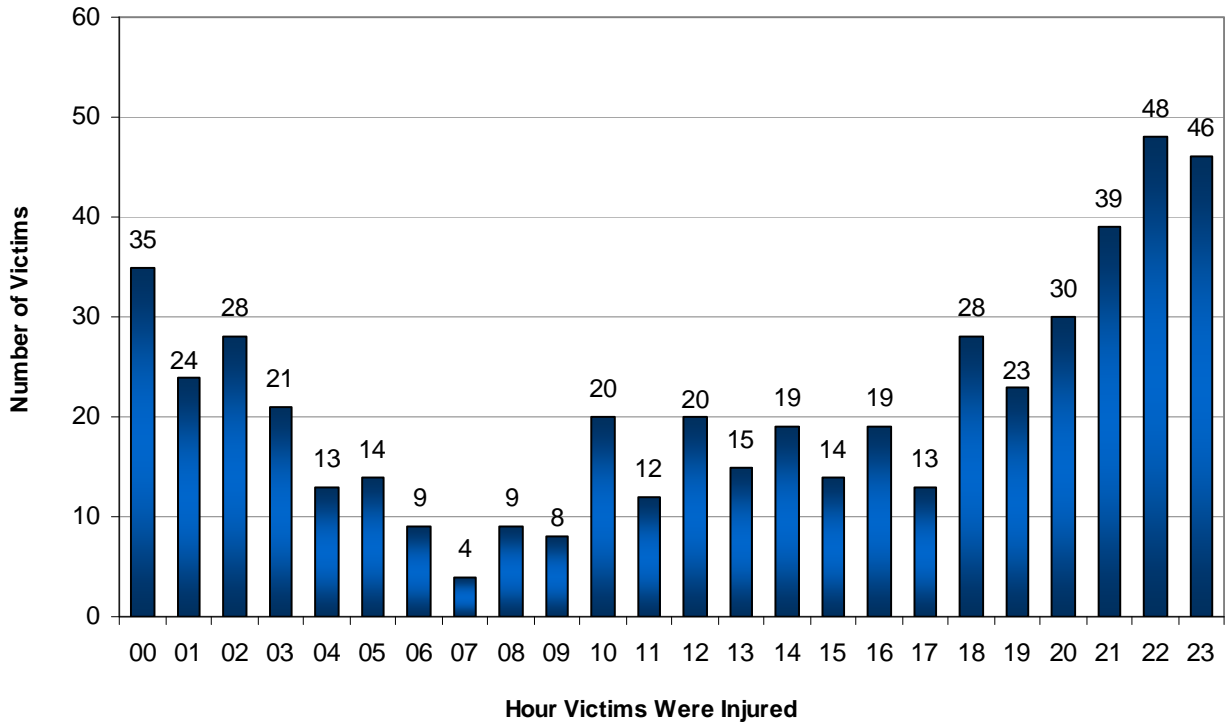


Figure 11 shows the percentage of murders from 1991 to 2008 that occurred during four six-hour segments. Table 11 provides the underlying data. As shown in Figure 111, throughout the time period examined, the majority of murder victims were injured during evening hours (i.e., between the hours of 1800 – 0559 hours).

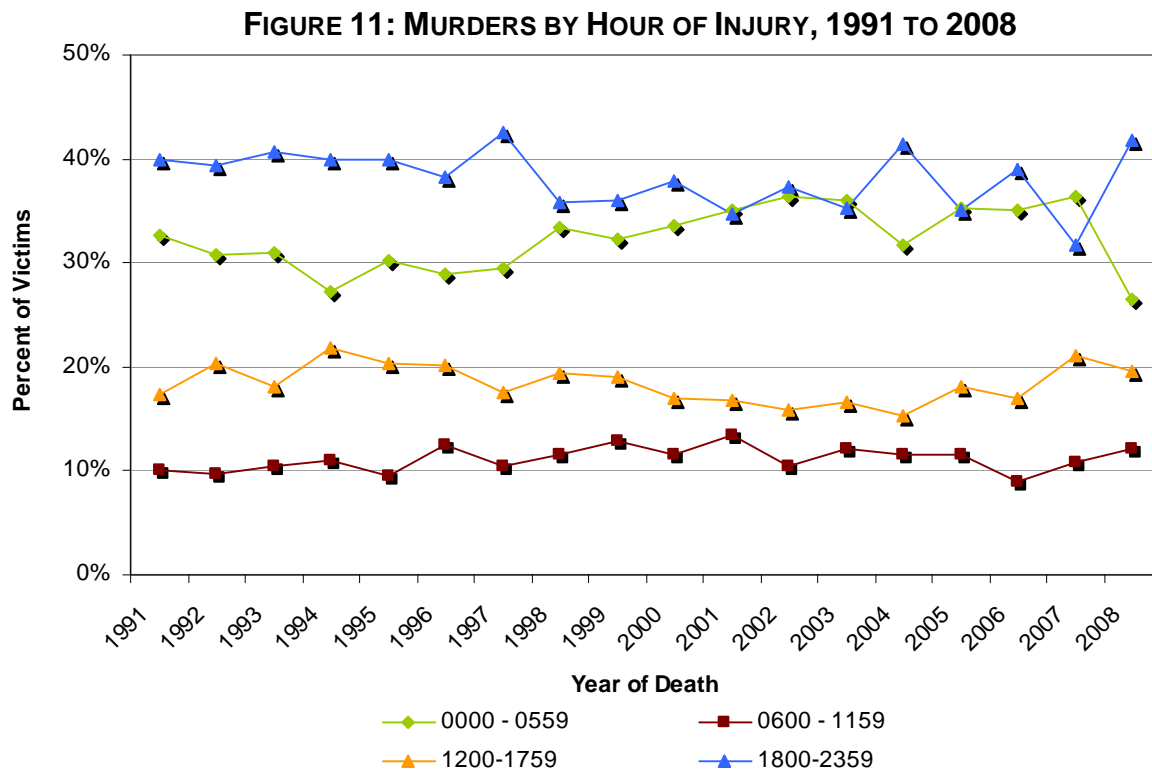


TABLE 11: MURDERS BY HOUR OF INJURY, 1991 TO 2008

Year	Hour of Injury				Total
	0000 - 0559	0600 - 1159	1200- 1759	1800- 2359	
1991	303	94	161	370	928
1992	290	91	191	371	943
1993	265	89	154	347	855
1994	254	103	203	371	931
1995	250	79	168	331	828
1996	230	100	161	305	796
1997	225	80	133	323	761
1998	235	81	136	252	704
1999	207	83	122	231	643
2000	213	73	107	240	633
2001	234	89	112	232	667
2002	238	69	104	244	655
2003	216	73	100	212	601
2004	144	52	69	188	453
2005	159	52	82	158	451
2006	165	42	80	184	471
2007	162	48	94	141	445
2008	135	62	100	214	511



Murder Totals by Method

Table 12 shows methods used to commit 2008 murders. Table 13 shows, for each method, a list of the weapons used to commit the murder. In 2008, the most common injury of murder victims was being shot, and nearly all of those shootings involved handguns.

TABLE 12: METHODS USED TO COMMIT MURDERS IN 2008

Type of Injury	Total	Percent
Shot	412	80.6%
Stabbed	45	8.8%
Assault	36	7.0%
Strangulation	8	1.6%
Blunt Force Injury	1	0.2%
Asphyxiation	1	0.2%
Other	8	1.6%
Total	511	100.0%

TABLE 13: WEAPONS USED TO COMMIT MURDERS IN 2008

Injury	Weapon	2008
SHOT	Handgun	402
	Rifle	3
	Shotgun	1
	Unknown/Other	6
		412
STABBING	Knife	31
	Other Stabbing/Cutting	4
	Pocket Knife	0
	Unknown	10
		45
ASSAULT	Hands/Feet	10
	Other Bludgeon Type	7
	Baseball Bat	2
	Pipe	0
	Hammer	0
	Unknown	17
		36
STRANGULATION	Hands/Feet	1
	Rope/Cordage	0
	Electrical/Phone Cord	0
	Clothing	1
	Unknown	5
	Other	1
		8
BLUNT FORCE INJURY	Unknown	1
ASPHYXIATION	Unknown	1
OTHER	Gasoline (Burning)	1
	Matches (Burning)	0
	Unknown	7
		8
TOTAL		511

Figure 12 shows trends in the percentage of murders that were shootings and stabbings. Table 14 shows corresponding totals. Since 1991, there has been a slight upward trend in the percentage of murders that were shootings, and a slight downward trend in the percentage of murders involving stabbings.

FIGURE 12: PERCENTAGE OF MURDERS THAT WERE SHOOTINGS AND STABBINGS, 1991 TO 2008

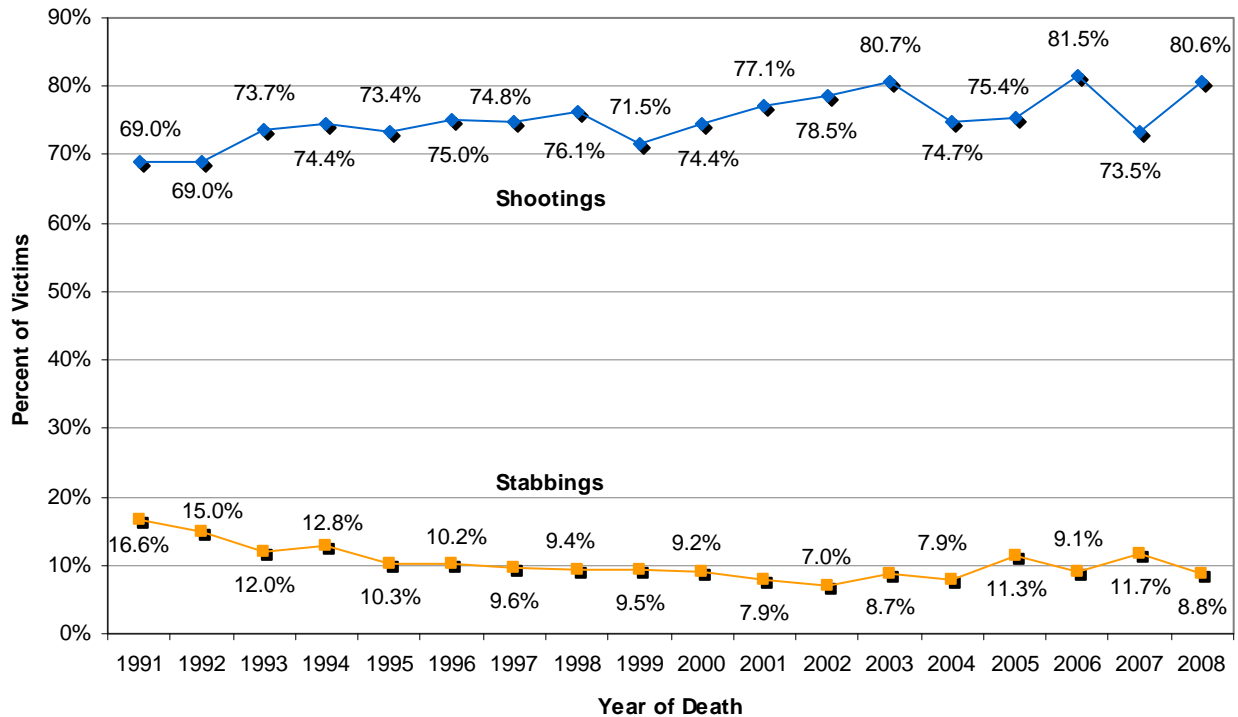


TABLE 14: SHOOTINGS AND STABBINGS, 1991 TO 2008

Year	Shot	Stabbed
1991	640	154
1992	651	141
1993	630	103
1994	693	119
1995	608	85
1996	597	81
1997	569	73
1998	536	66
1999	460	61
2000	471	58
2001	514	53
2002	515	46
2003	485	52
2004	339	36
2005	340	51
2006	384	43
2007	327	52
2008	412	45



Murder Totals by Motive

Table 15 shows motives for 2008 murders. The majority murders in 2008 were the result of some type of altercation, most of which were street gang altercations.

TABLE 15: MOTIVES FOR MURDERS IN 2008

Motive	2008
<i>Altercation Involving</i>	
General Domestic	37
Liquor	3
Love Triangle	9
Money	10
Other	69
Over Children	1
Over Gambling	5
Sex	1
Street Gangs	185
Theft (Alleged)	4
Traffic	0
	324
<i>Burglary</i>	1
<i>Careless UUW</i>	2
<i>Gangland</i>	
Narcotics	23
	23
<i>Narcotics</i>	
Territorial	21
	21
<i>Other</i>	
Arson	0
Child Abuse	12
Fleeing Felon	2
Intercede in Felony	0
Kidnapping	0
Mental Disorder	1
Retaliation	16
Suicide Pact	0
	31

**TABLE 15: MOTIVES FOR MURDERS IN 2008
(CONTINUED)**

Motive	2008
<i>Robbery</i>	
Armed	52
Strong Arm	5
	57
<i>Sex</i>	
Assault of Women	3
	3
<i>Under Investigation</i>	49
Total	511

Figure 13 shows trends in the percentage of murder incidents by the five most common motives. Table 16 shows corresponding totals. For street gang altercations, gang-related narcotics, and other altercations, the overall trend increased from 1991 to 2008. The percentages for the other two motives remained fairly stable.

FIGURE 13: PERCENTAGE OF MURDERS CAUSED BY FIVE COMMON MOTIVES, 1991 TO 2008

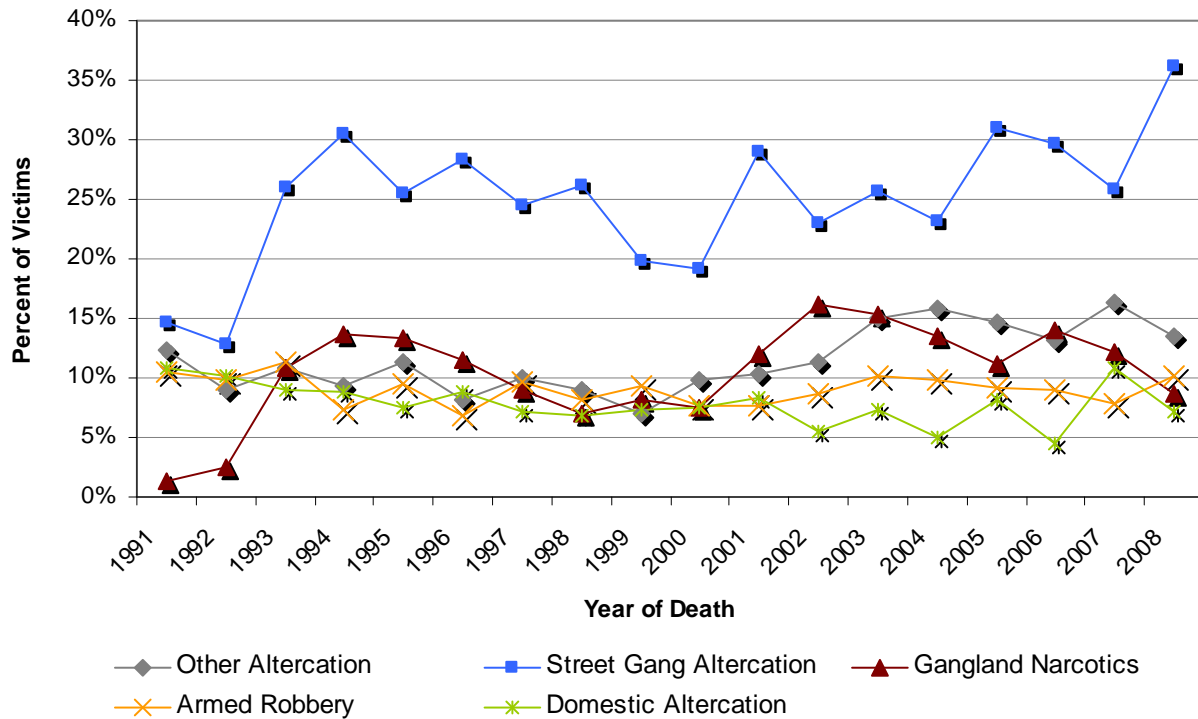


TABLE 16: MURDERS CAUSED BY FIVE COMMON MOTIVES, 1991 TO 2008

Year	Other Altercation	Street Gang Altercation	Gangland Narcotics	Armed Robbery	Domestic Altercation
1991	115	136	12	98	101
1992	85	121	23	92	96
1993	93	223	92	97	77
1994	87	284	127	69	83
1995	94	211	110	78	62
1996	65	225	91	55	70
1997	76	186	69	74	54
1998	63	184	49	58	48
1999	45	128	53	60	47
2000	62	121	48	49	48
2001	69	193	80	51	56
2002	74	151	106	57	36
2003	90	154	92	61	44
2004	72	105	61	45	23
2005	66	140	50	41	37
2006	62	140	66	42	21
2007	73	115	54	35	48
2008	69	185	44	52	37



Murder Victims

This section describes the following characteristics of murder victims: (1) age at time of death, (2) sex, (3) race and ethnicity, and (4) whether the victim had a prior arrest history.

In 2008, the age of murder victims ranged from under 1 to 88 years old at the time of death. The average age was 28 years old. The most frequent age was 22 years old. Figure 14 shows the ages of murder victims for 2008.

FIGURE 14: NUMBER OF MURDER VICTIMS BY AGE AT TIME OF DEATH, 2008

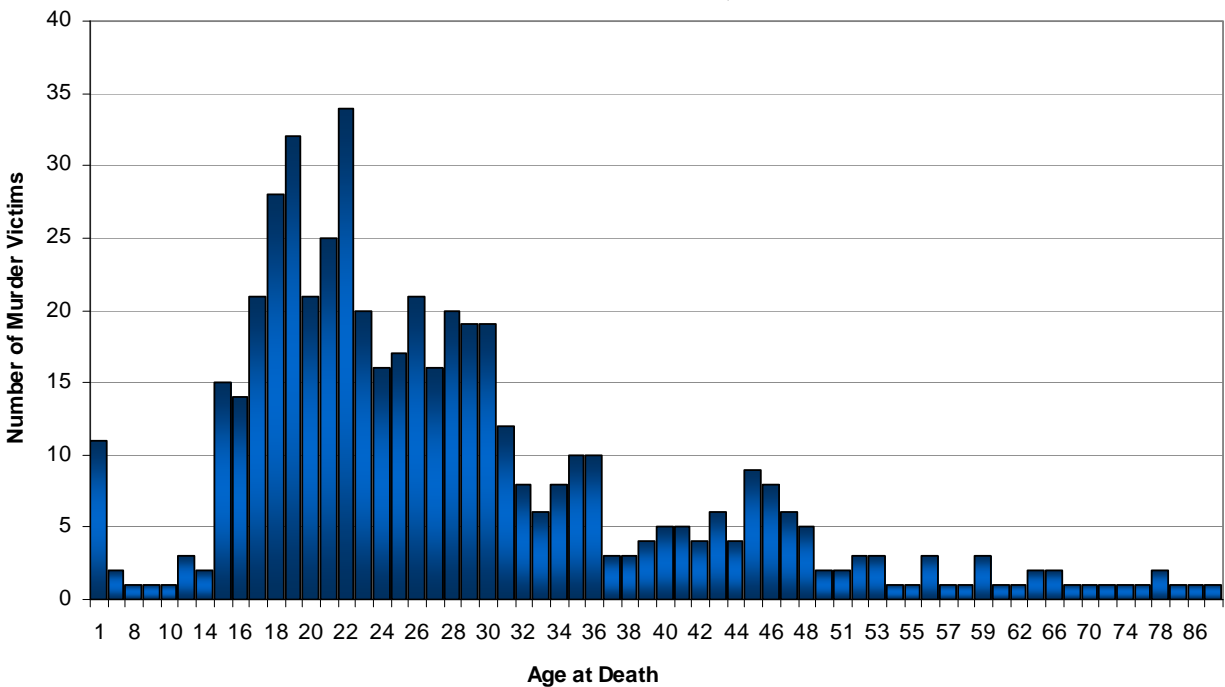


Figure 15 shows the percent of murder victims by age group from 1991 to 2008. Table 17 shows corresponding totals. As indicated in the figure, victims between the ages of 17 and 25 accounted for the largest percentage of murder victims during the time period examined. The figure also shows that, despite some fluctuation, the age ranges of murder victims have remained relatively stable from 1991 to 2008.



FIGURE 15: PERCENTAGE OF MURDER VICTIMS BY AGE GROUP, 1991 TO 2008

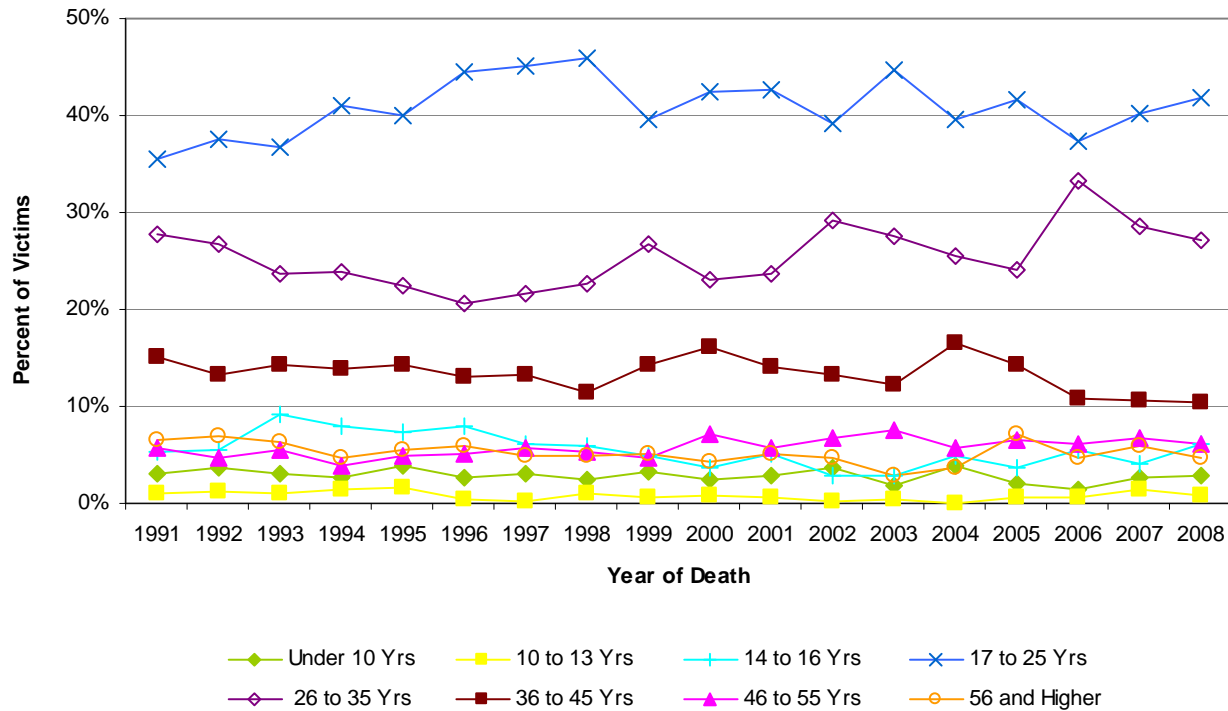


TABLE 17: MURDER VICTIMS BY AGE GROUP, 1991 TO 2008

Year	Under 10 Yrs	10 to 13 Yrs	14 to 16 Yrs	17 to 25 Yrs	26 to 35 Yrs	36 to 45 Yrs	46 to 55 Yrs	Over 55 Yrs	Total
1991	28	9	49	330	257	141	53	60	928
1992	34	12	52	354	252	126	45	66	943
1993	27	8	79	314	202	122	47	54	855
1994	25	14	75	381	222	129	36	44	931
1995	32	13	60	332	186	118	41	45	828
1996	21	3	63	354	164	104	40	47	796
1997	23	1	47	344	164	101	44	37	761
1998	17	7	42	323	160	81	37	35	704
1999	21	4	32	255	172	92	30	33	643
2000	15	5	23	269	146	102	45	27	633
2001	19	4	34	285	158	94	38	34	667
2002	24	2	19	257	192	87	44	31	656
2003	11	3	17	268	166	74	45	17	601
2004	18	0	22	180	116	75	26	17	454
2005	9	3	17	188	109	64	29	32	451
2006	7	3	26	176	157	51	29	22	471
2007	12	6	18	179	127	47	30	26	445
2008	15	4	31	214	139	53	31	24	511



Figure 16 shows the percentage of murder victims by sex for 2008. As shown, males accounted for the large majority of murder victims in 2008.

FIGURE 16: PERCENTAGE OF MURDER VICTIMS BY SEX, 2008

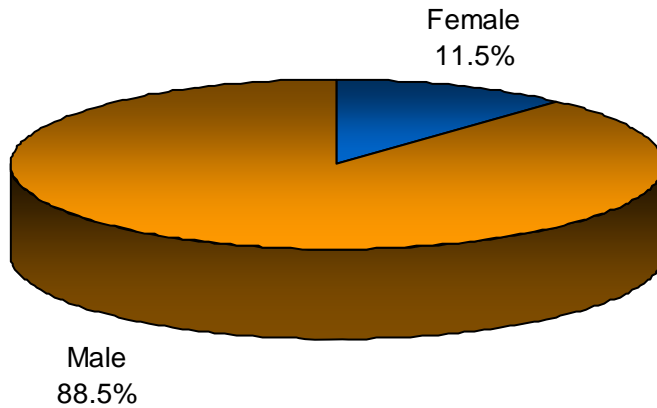
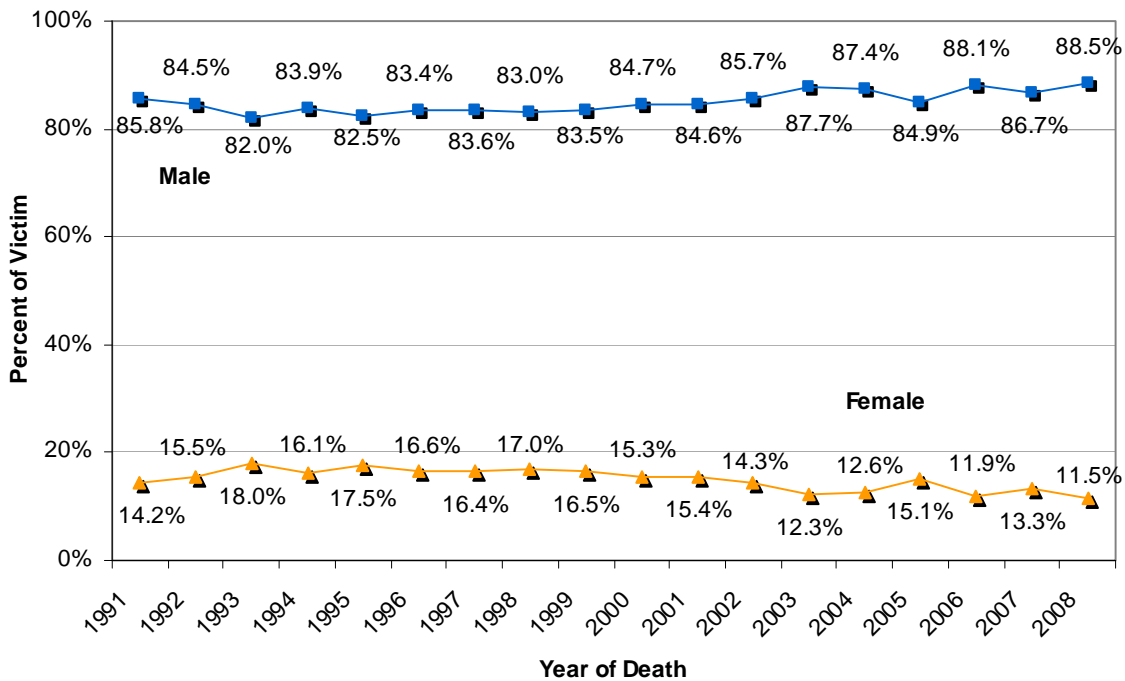


Figure 17 shows the percentage of murder victims by sex from 1991 to 2008. Table 18 provides the underlying data. As indicated in the figure and table, the large majority of murder victims were male, and this trend has increased slightly from 1991 to 2008.

FIGURE 17: PERCENTAGE OF MURDER VICTIMS BY SEX, 1991 TO 2008

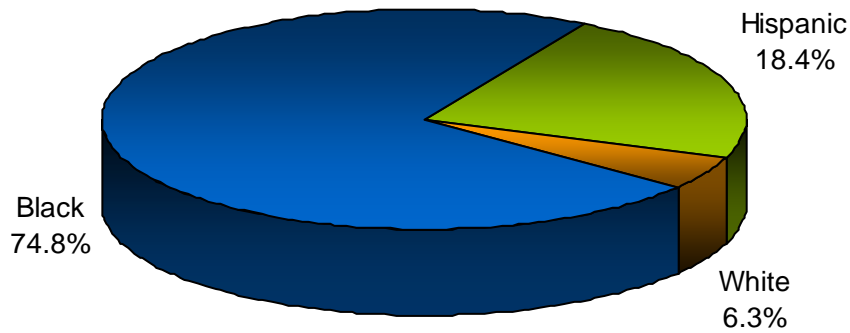


**TABLE 18: MURDER VICTIMS BY SEX,
1991 TO 2008**

Year	Female	Male	Total
1991	132	796	928
1992	146	797	943
1993	154	701	855
1994	150	781	931
1995	145	683	828
1996	132	664	796
1997	125	636	761
1998	120	584	704
1999	106	537	643
2000	97	536	633
2001	103	564	667
2002	94	562	656
2003	74	527	601
2004	57	397	454
2005	68	383	451
2006	56	415	471
2007	59	386	445
2008	59	452	511

Figure 18 shows the percentage of murder victims by race/ethnicity for 2008. A large majority of murder victims were black (74.8%), followed by Hispanic (18.4%).

FIGURE 18: PERCENTAGE OF MURDER VICTIMS BY RACIAL AND ETHNIC GROUP, 2008^a



a: Other racial/ethnic groups accounted for 0.6% of murder victims.

Figure 19 shows trends in the percentage of murder victims by race/ethnicity. Table 19 shows corresponding totals. As indicated in Figure 19, the percentages accounted for by black victims have remained relatively stable, while the percentage accounted for by Hispanic victims gradually increased and the percentage for whites has gradually decreased.

FIGURE 19: PERCENTAGE OF MURDER VICTIMS BY RACE/ETHNICITY, 1991 TO 2008

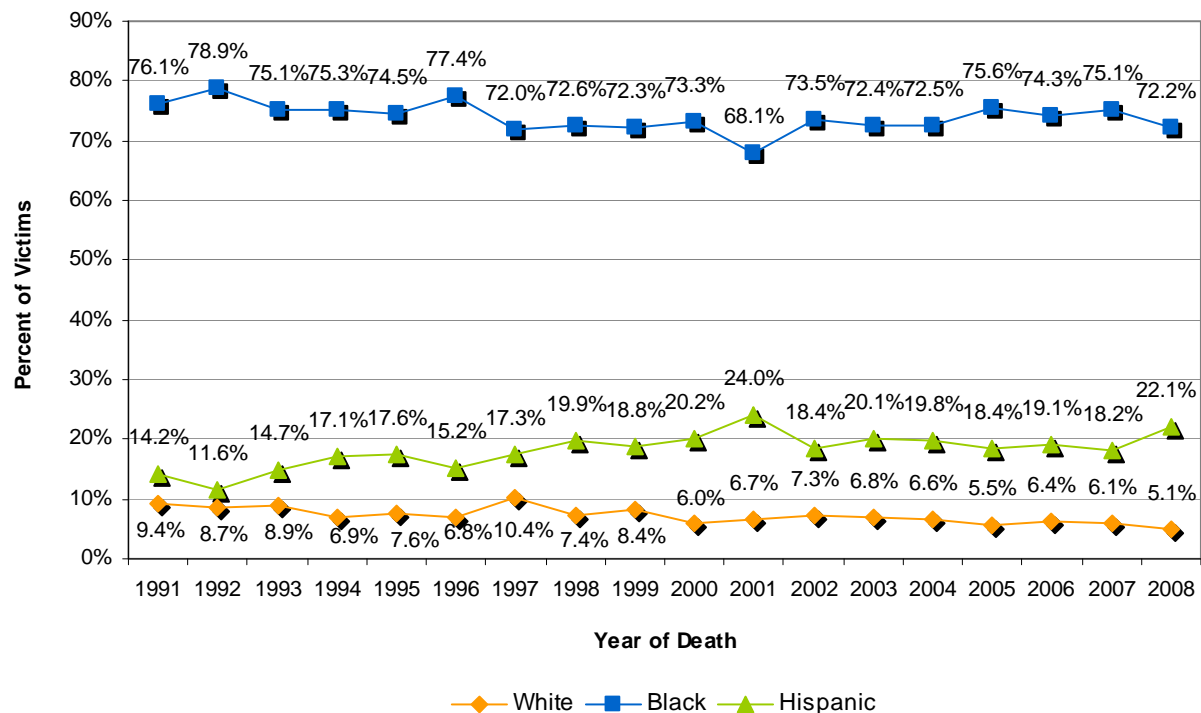


TABLE 19: MURDER VICTIMS BY RACE/ETHNICITY, 2008

Year	White	Black	Hispanic	Other	Unknown	Total
1991	87	706	132	3	0	928
1992	82	744	109	8	0	943
1993	76	642	126	11	0	855
1994	64	701	159	7	0	931
1995	63	617	146	2	0	828
1996	54	616	121	5	0	796
1997	79	548	132	2	0	761
1998	52	511	140	1	0	704
1999	54	465	121	2	1	643
2000	38	464	128	3	0	633
2001	45	454	160	8	0	667
2002	48	482	121	5	0	656
2003	41	435	121	4	0	601
2004	30	329	90	5	0	454
2005	25	341	83	2	0	451
2006	30	350	90	1	0	471
2007	27	334	81	2	1	445
2008	26	369	113	3	0	511

Figure 20 shows the percentage of murder victims for 2008 who had prior arrest histories (at least one prior arrest) with the Chicago Police Department. As this figure indicates, the majority of victims in 2008 had prior arrest histories.

FIGURE 20: PERCENTAGE OF MURDER VICTIMS WITH PRIOR ARREST HISTORIES, 2008

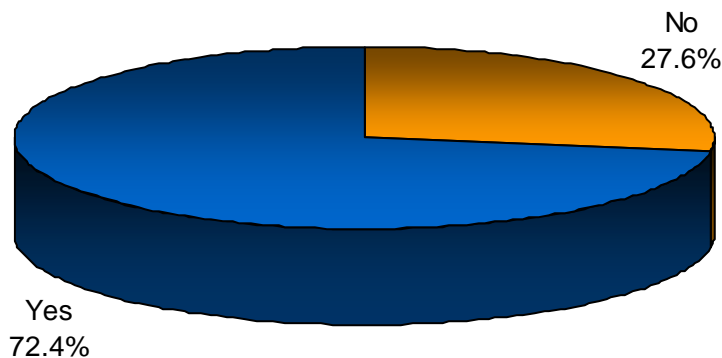


Figure 21 shows the percentage of murder victims with prior arrest histories from 1991 to 2008. Table 20 provides the underlying data. The percentage of victims with prior arrest histories has increased since 1991, but some of that increase is likely due to information system improvements that allow detectives to quickly and easily determine if the victim has a prior arrest history.

FIGURE 21: PERCENTAGE OF MURDER VICTIMS WITH PRIOR ARREST HISTORIES, 1991 TO 2008

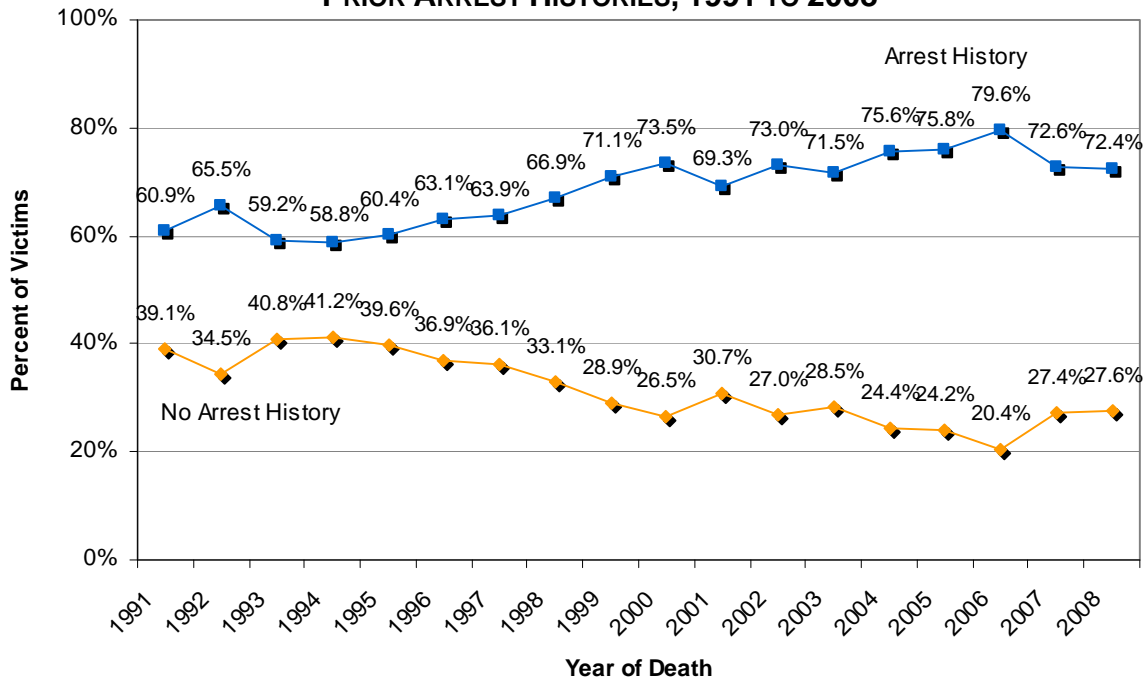


TABLE 20: MURDER VICTIMS WITH PRIOR ARREST HISTORIES, 1991 TO 2008

Year	No	Yes	Total
1991	363	565	928
1992	325	618	943
1993	349	506	855
1994	384	547	931
1995	328	500	828
1996	294	502	796
1997	275	486	761
1998	233	471	704
1999	186	457	643
2000	168	465	633
2001	205	462	667
2002	177	479	656
2003	171	430	601
2004	111	343	454
2005	109	342	451
2006	96	375	471
2007	122	323	445
2008	141	370	511



Murder Offenders

This section describes the characteristics of murder offenders: (1) age at time of clearance, (2) sex, (3) race and ethnicity, and (4) whether the offender had a prior arrest history. The information described in this section is based on the characteristics of murder offenders only in cases that have been cleared. Therefore, the information does not include characteristics of suspected murder offenders. Figure 22 shows the number of murder offenders from 1991 to 2008, as of the date the data were queried. Totals will change as more cases are cleared.

FIGURE 22: NUMBER OF MURDER OFFENDERS, 1991 TO 2008

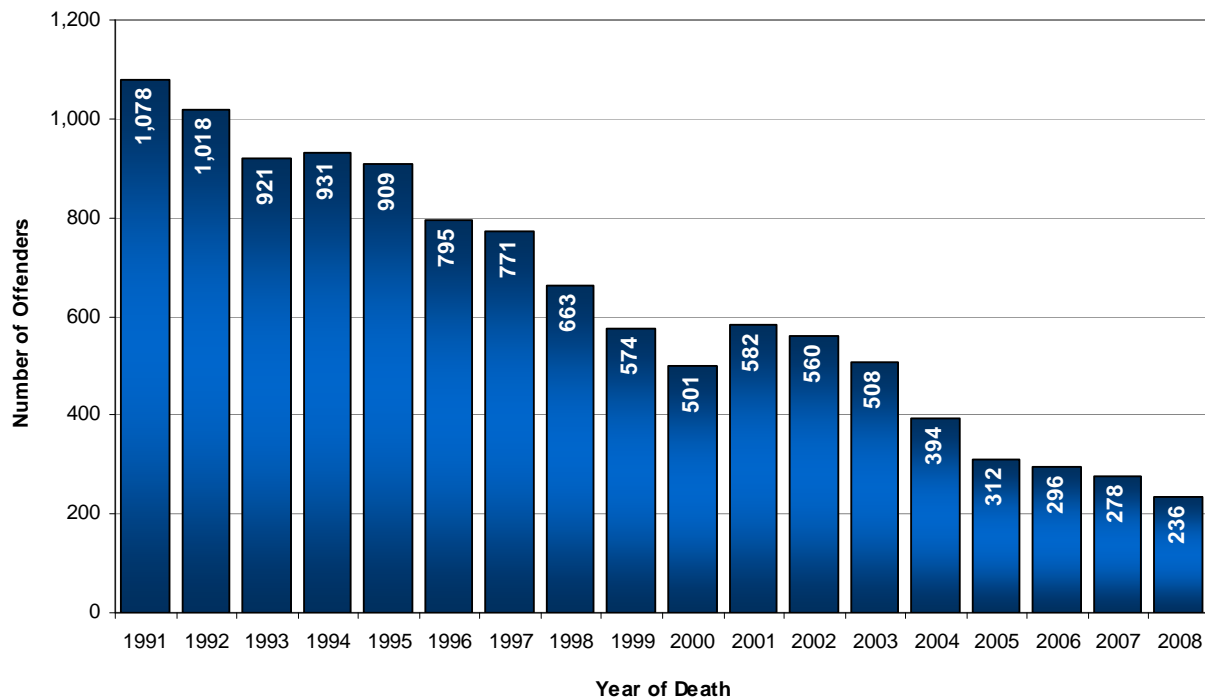


Figure 23 shows the percentage of murder victims who were murdered by one offender, two offenders, and three or more offenders. As Figure 23 indicates, the majority of murders were committed by one offender.

FIGURE 23: MURDER VICTIMIZATION BY NUMBER OF OFFENDERS, 2008

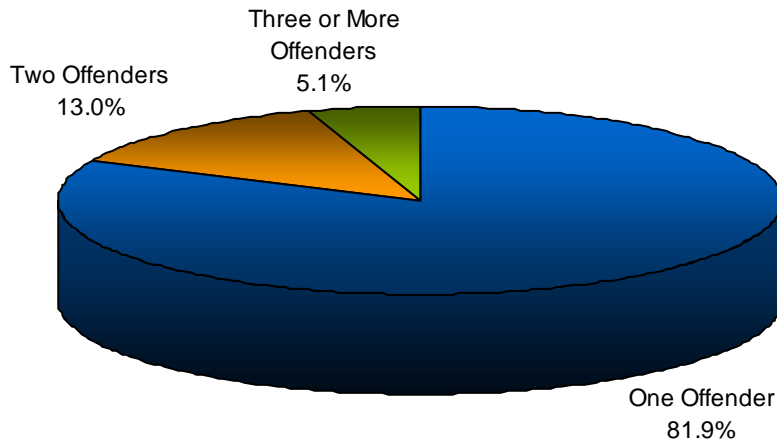


Figure 24 shows trends in murder victimization by number of offenders. Table 21 shows corresponding totals. The trend shows that the percentage of single offender murders has increased slightly since 2000.

FIGURE 24: PERCENTAGE OF MURDER VICTIMS BY NUMBER OF OFFENDERS, 1991 TO 2008

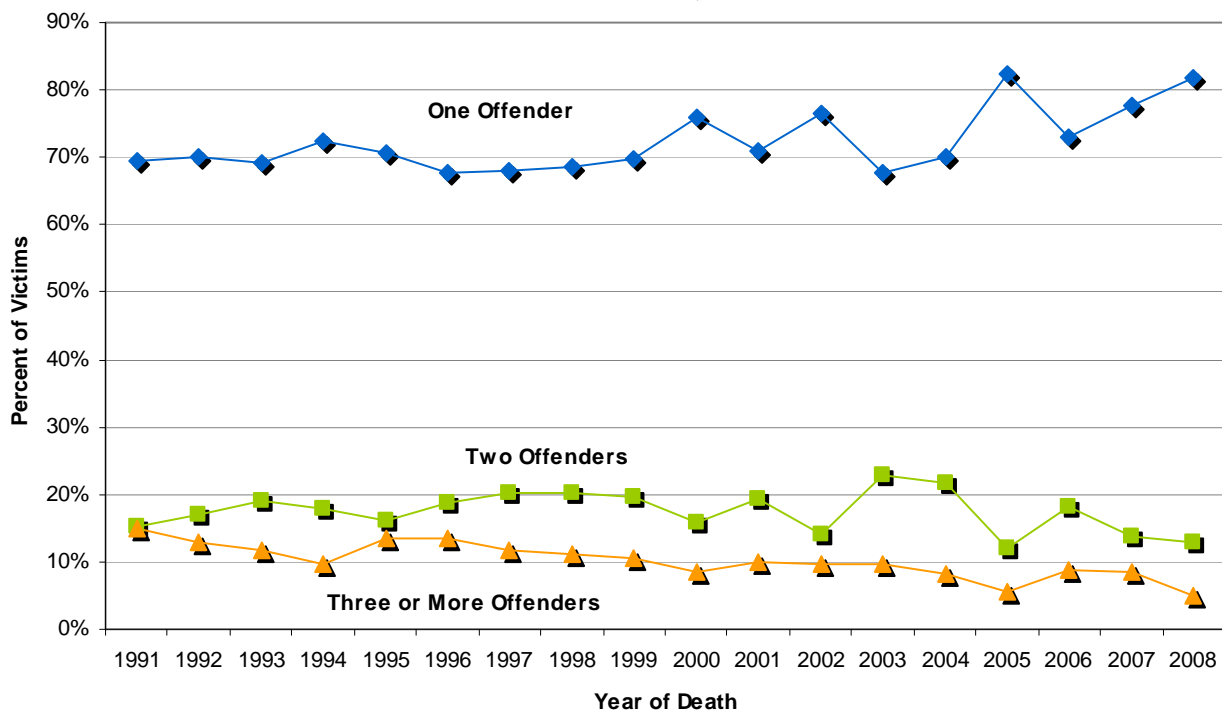


TABLE 21: MURDER VICTIMS BY NUMBER OF OFFENDERS, 1991 TO 2008

Year	One Offender	Two Offenders	Three or More Offenders
1991	470	104	102
1992	457	111	85
1993	421	115	72
1994	452	112	60
1995	409	93	78
1996	343	95	68
1997	328	98	56
1998	302	89	49
1999	272	77	41
2000	280	58	31
2001	279	76	39
2002	296	54	37
2003	223	75	32
2004	190	59	22
2005	207	30	14
2006	157	39	19
2007	158	28	17
2008	145	23	9

In 2008, the age of murder offenders when the case was cleared ranged from 14 to 75 years old. The average age was 27 years old. The most frequent ages were 18 and 25 years old. Figure 25 shows the number of 2008 murders by the age of the offender when the case was cleared.

FIGURE 25: NUMBER OF MURDER OFFENDERS BY AGE WHEN THE CASE WAS CLEARED, 2008

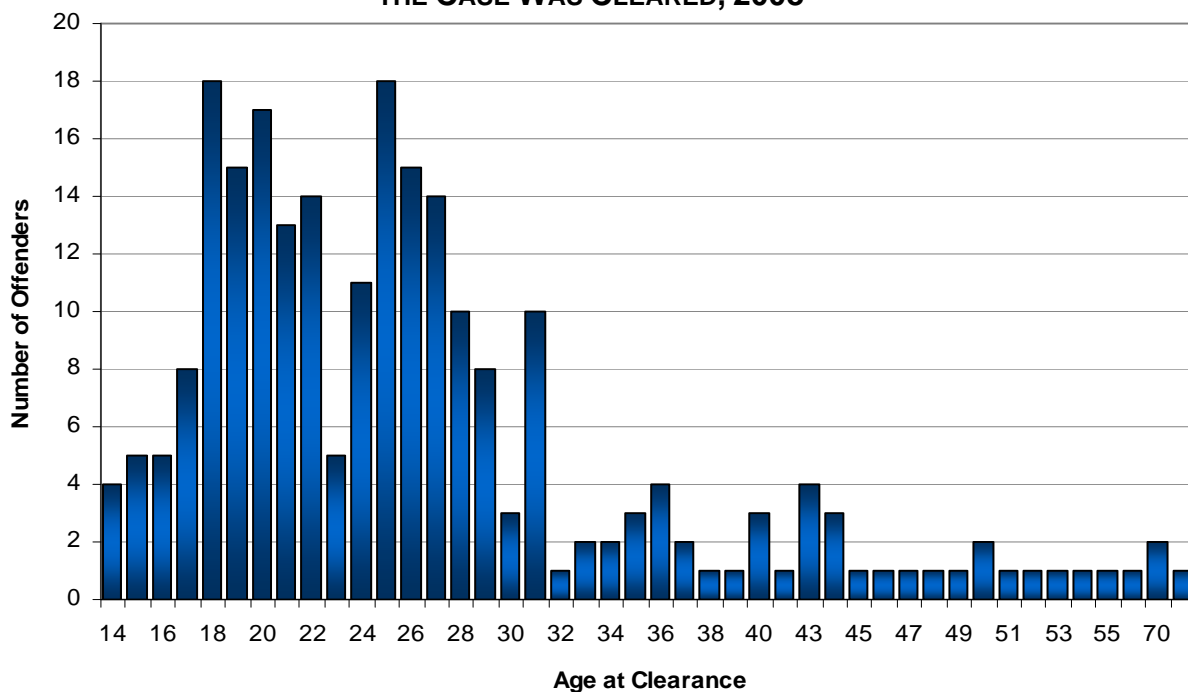
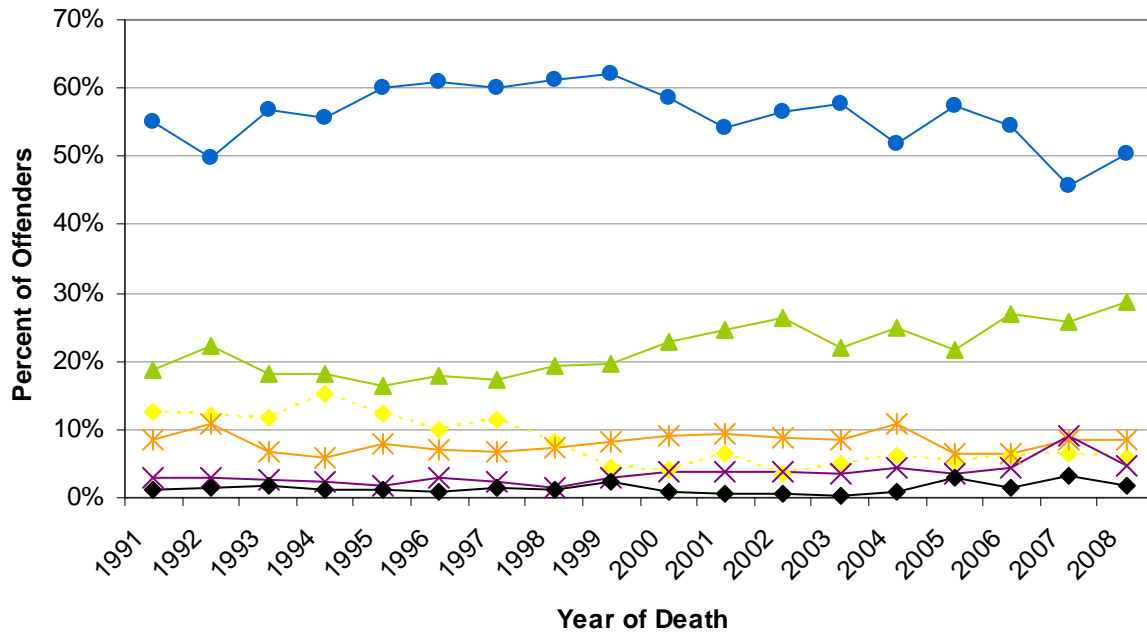


Figure 26 shows the percentage of murder offenders by age group from 1991 to 2008. Table 22 shows corresponding totals. Offenders between the ages 17 and 25 years accounted for the largest percentage of murder offenders during the time period examined. Also noted was an upward trend in the percentage of murders accounted for by offenders between the ages of 26 and 35 years.

FIGURE 26: PERCENTAGE OF MURDER OFFENDERS BY AGE GROUP, 1991 TO 2008



◆ 14 to 16 Yrs ● 17 to 25 Yrs ▲ 26 to 35 Yrs
✱ 36 to 45 Yrs ✱ 46 to 55 Yrs ◆ 56 and Higher



**TABLE 22: MURDER OFFENDERS BY AGE GROUP,
1991 TO 2008**

Year	Unknown	Under 10 Yrs	10 to 13 Yrs	14 to 16 Yrs	17 to 25 Yrs	26 to 35 Yrs	36 to 45 Yrs	46 to 55 Yrs	Over 55 Yrs	Total
1991	0	0	9	136	594	201	92	32	14	1,078
1992	1	0	7	121	508	227	109	30	15	1,018
1993	1	0	15	109	523	168	63	25	17	921
1994	0	0	14	141	519	169	55	22	11	931
1995	1	0	4	112	547	148	72	15	10	909
1996	0	0	4	80	484	141	55	23	8	795
1997	1	0	4	89	464	133	52	17	11	771
1998	2	1	5	55	405	129	49	9	8	663
1999	0	0	3	25	357	113	47	16	13	574
2000	2	0	2	20	294	114	45	19	5	501
2001	4	0	0	38	316	144	54	23	3	582
2002	2	0	1	20	316	147	49	22	3	560
2003	13	0	2	26	293	111	43	18	2	508
2004	4	0	0	24	204	98	43	17	4	394
2005	8	0	1	16	179	68	20	11	9	312
2006	1	0	0	18	161	80	19	13	4	296
2007	2	0	1	18	127	72	24	25	9	278
2008	0	0	0	14	119	68	20	11	4	236

Figure 27 shows the percentage of murder offenders by sex for 2008. As shown, most murder offenders were male.

**FIGURE 27: PERCENTAGE OF MURDER OFFENDERS
BY SEX, 2008**

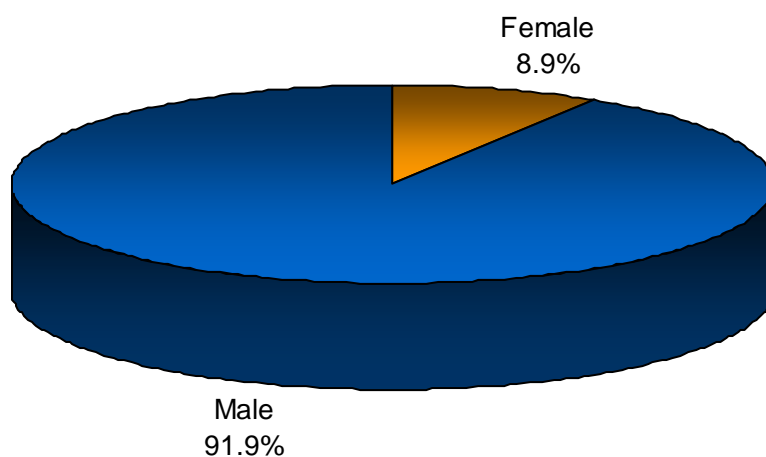


Figure 28 shows the percentage of murder offenders by sex from 1991 to 2008. Table 23 provides the underlying data. As indicated by both the figure and table, males have consistently accounted for the majority of murder offenders throughout the time period examined.

FIGURE 28: PERCENTAGE OF MURDER OFFENDERS BY SEX, 1991 TO 2008

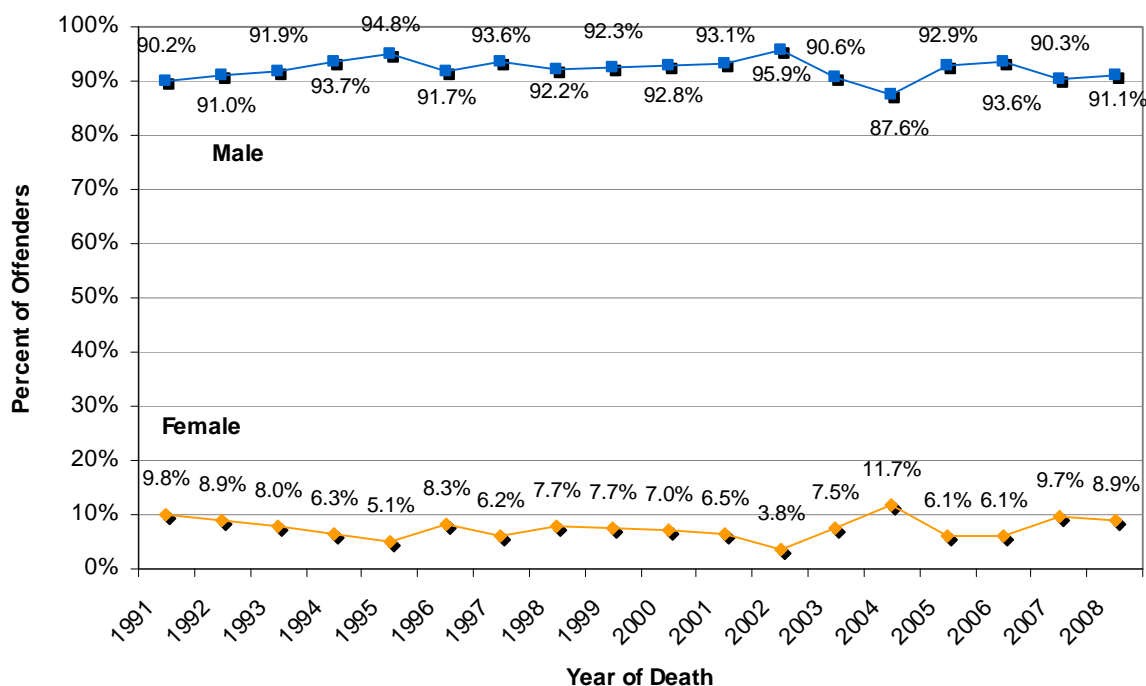


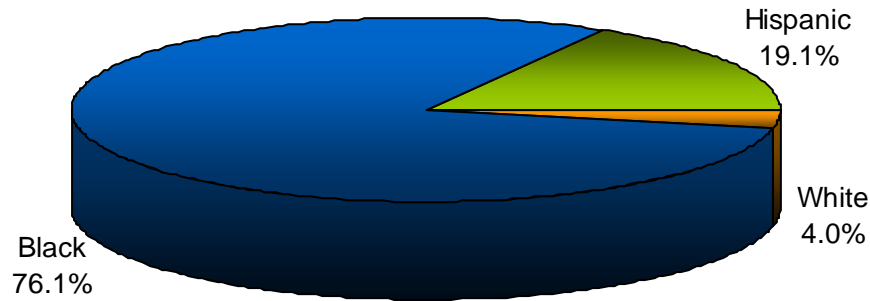
TABLE 23: MURDER OFFENDERS BY SEX, 1991 TO 2008

Year	Unknown	Female	Male	Total
1991	0	106	972	1078
1992	1	91	926	1018
1993	1	74	846	921
1994	0	59	872	931
1995	1	46	862	909
1996	0	66	729	795
1997	1	48	722	771
1998	1	51	611	663
1999	0	44	530	574
2000	1	35	465	501
2001	2	38	542	582
2002	2	21	537	560
2003	10	38	460	508
2004	3	46	345	394
2005	3	19	290	312
2006	1	18	277	296
2007	0	27	251	278
2008	0	21	215	236



Figure 29 shows the percentage of murder offenders by race/ethnicity for 2008. A majority of murder offenders were black, followed by Hispanic.

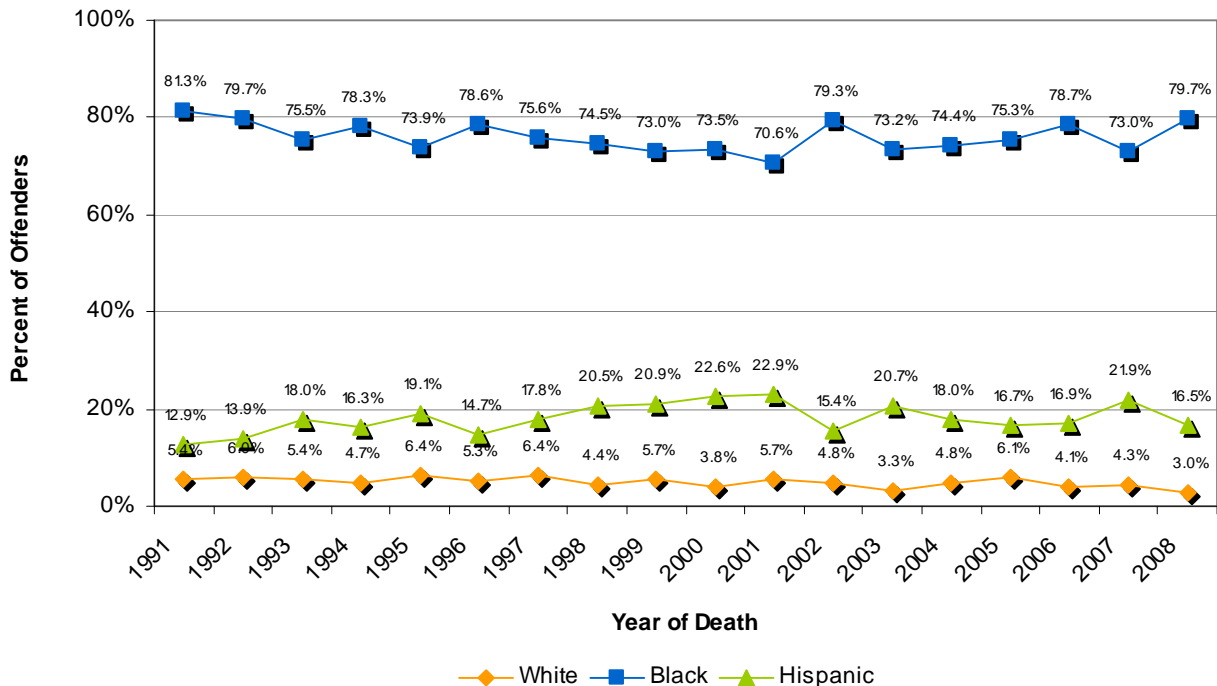
FIGURE 29: PERCENTAGE OF MURDER OFFENDERS BY RACIAL AND ETHNIC GROUP, 2008



a: Other racial/ethnic groups accounted for 0.8% of murder offenders.

Figure 30 shows trends in the percentage of murder offenders by race/ethnicity. Table 24 shows corresponding totals. The percentages have remained relatively stable over time for whites, but have decreased slightly for blacks and increased slightly for Hispanics.

FIGURE 30: PERCENTAGE OF MURDER OFFENDERS BY RACE/ETHNICITY, 1991 TO 2008



**TABLE 24: MURDER OFFENDERS BY RACE/ETHNICITY,
1991 TO 2008**

Year	White	Black	Hispanic	Other	Unknown	Total
1991	58	876	139	5	0	1,078
1992	61	811	141	4	1	1,018
1993	50	695	166	9	1	921
1994	44	729	152	6	0	931
1995	58	672	174	4	1	909
1996	42	625	117	9	2	795
1997	49	583	137	1	1	771
1998	29	494	136	3	1	663
1999	33	419	120	2	0	574
2000	19	368	113	0	1	501
2001	33	411	133	2	3	582
2002	27	444	86	0	3	560
2003	17	372	105	4	10	508
2004	19	293	71	2	9	394
2005	19	235	52	0	6	312
2006	12	233	50	0	1	296
2007	12	203	61	1	1	278
2008	7	188	39	2	0	236

Figure 31 shows the percentage of murder offenders for 2008 who had prior arrest histories (at least one prior arrest) with the Chicago Police Department. As illustrated, 91.5 percent of murder offenders had prior arrest histories.

FIGURE 31: PERCENTAGE OF MURDER OFFENDERS WITH AN ARREST HISTORY, 2008

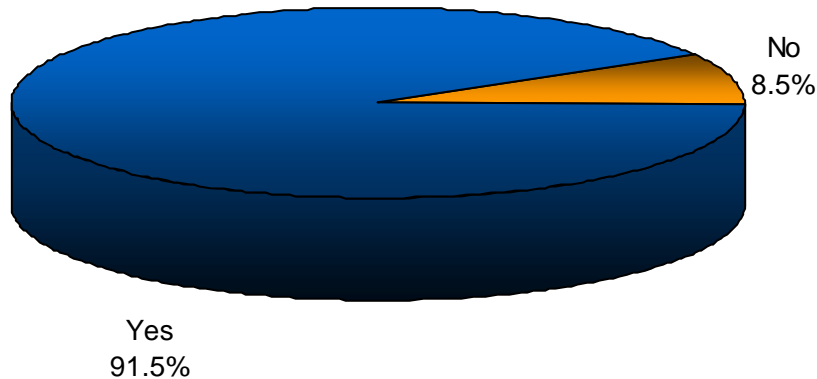
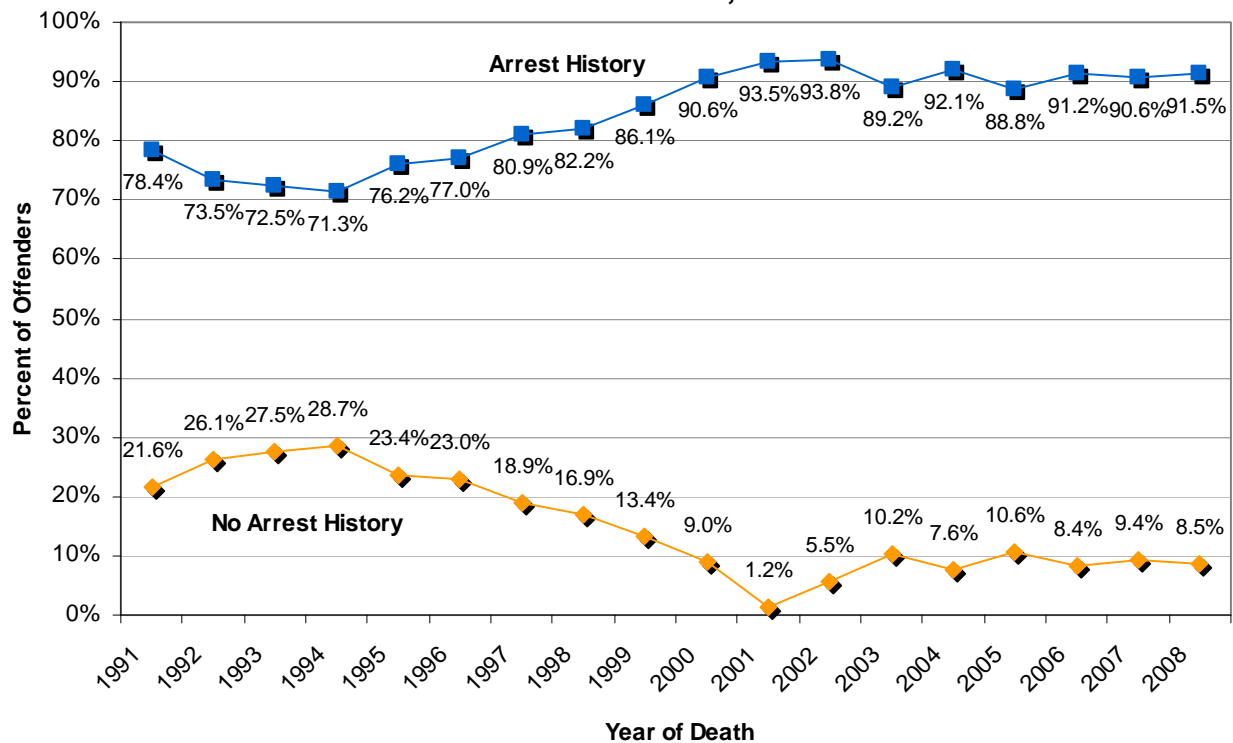


Figure 32 shows the percentage of murder offenders who had prior arrest histories from 1991 to 2008. Table 25 provides the underlying data. As shown in Figure 32, the percentage of murder offenders with prior arrest histories has increased, overall, from 1991 to 2008. Similar to the prior arrest history data for victims, this increase may be partly a by-product of improved information systems.

FIGURE 32: PERCENTAGE OF MURDER OFFENDERS WITH AN ARREST HISTORY, 1991 - 2008



**TABLE 25: MURDER OFFENDERS WITH AN ARREST HISTORY,
1991 TO 2008^a**

Year	Missing	No	Yes	Total	% Yes
1991	0	233	845	1,078	78.4%
1992	4	266	748	1,018	73.5%
1993	0	253	668	921	72.5%
1994	0	267	664	931	71.3%
1995	3	213	693	909	76.2%
1996	0	183	612	795	77.0%
1997	1	146	624	771	80.9%
1998	6	112	545	663	82.2%
1999	3	77	494	574	86.1%
2000	2	45	454	501	90.6%
2001	31	7	544	582	93.5%
2002	4	31	525	560	93.8%
2003	3	52	453	508	89.2%
2004	1	30	363	394	92.1%
2005	2	33	277	312	88.8%
2006	1	25	270	296	91.2%
2007	0	26	252	278	90.6%
2008	0	20	216	236	91.5%

a: During 2001, there was an increase in the number of offenders for whom prior arrest information was missing. This likely contributed to the drop from 2000 to 2001 in the percentage of offenders who had no arrest history.

III. Conclusion

This report examined the characteristics of 2008 murders in Chicago, and annual murder trends from 1991 to 2008. The following bullet points summarize the report:

- In 2008, there were 511 murder victims in Chicago. The 2008 total was 14.8% higher than the total in 2007, although 44.9% lower than the total for 1991.
- Although the 2008 murder victim rate was numerically higher than the rate for 2007, the increase was not significant. Additionally, it was noted that there was a significant decline in the murder rate between 2003 and 2004, after which the murder rate has remained relatively stable, with no significant increases or decreases.
- Police districts 3, 7, and 11 had the highest 2008 murder rates.
- From 2007 to 2008, murder rates in 17 of 25 districts increased.
- In 2008, a majority of murder victims were found outdoors (78.7%).
- As of the date the data were extracted, the citywide clearance percentage for murders occurring in 2008 was 33.5%. Note: This percentage will change over time as additional murder cases are cleared.
- In 2008, approximately 50% of murders occurred on Friday, Saturday, or Sunday. This percentage was consistent with prior years.
- In 2008, murders increased slightly during warmer months. This increase in the warmer months was consistent with the years examined.
- In 2008, the majority of murders occurred between 1800 and 0359 hours. This was consistent with prior years.
- In 2008, 80.6% of murders involved a shooting. Since 1991, there has been a slight upward trend in the percentage of murders that were shootings.
- The majority murders in 2008 were the result of street gang altercations. The overall trend in street gang altercations increased from 1991 to 2008.
- In 2008, the typical murder victim was 17 to 25 years of age, male, black, and had a prior arrest history.
- In 2008, a typical murder offender was 17 to 25 years of age, male, black, and had a prior arrest history.